

# Geomagnetic Tools for Space Weather Monitoring

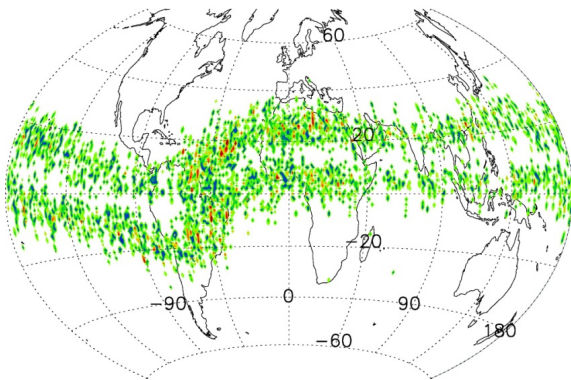
Stolle, C; Matzka, J; Korte, M; Linthe, H-J; Park, J; Kervalishvili, G; Rauberg, J; Lühr, H

Helmholtz Centre Potsdam GFZ German Research Centre for Geosciences

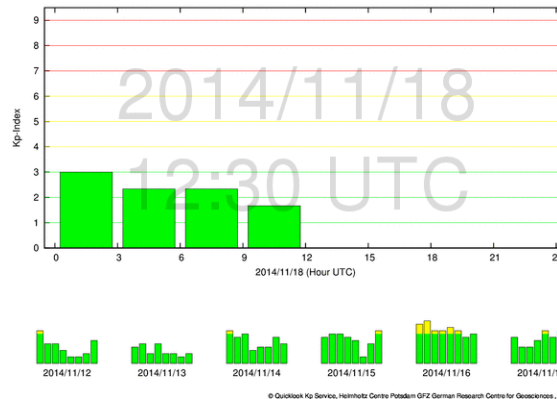
Contact: [cstolle@gfz-potsdam.de](mailto:cstolle@gfz-potsdam.de)

## Objectives:

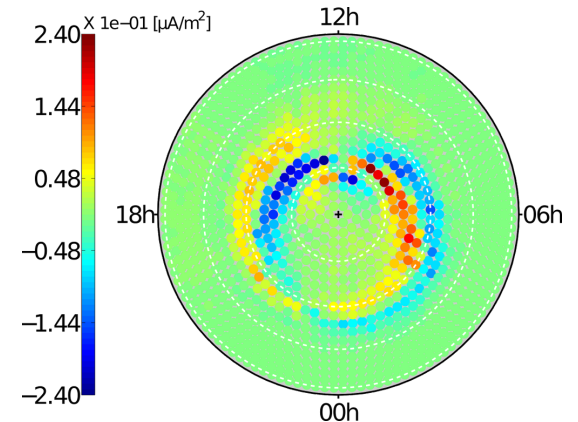
- Magnetic variations provide **real time observations** of ionospheric and magnetospheric currents, describe the **geomagnetic activity** state of the Sun-Earth system
- Space Weather capabilities from **ground magnetic observatories** and the **Swarm satellite** constellation mission
- The shape and strength of the geomagnetic **main field** determines the **location and strengths of ionospheric current** systems



Nr. of detected **equatorial plasma irregularities** from 9 years of magnetic CHAMP satellite data



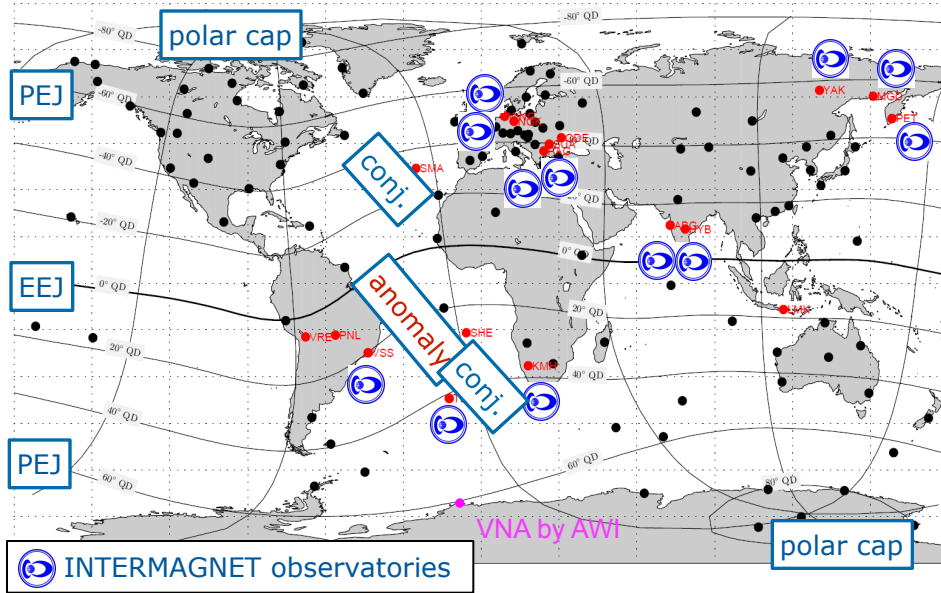
**Real time Kp index** from ground magnetic observatories produced at and available from GFZ Potsdam



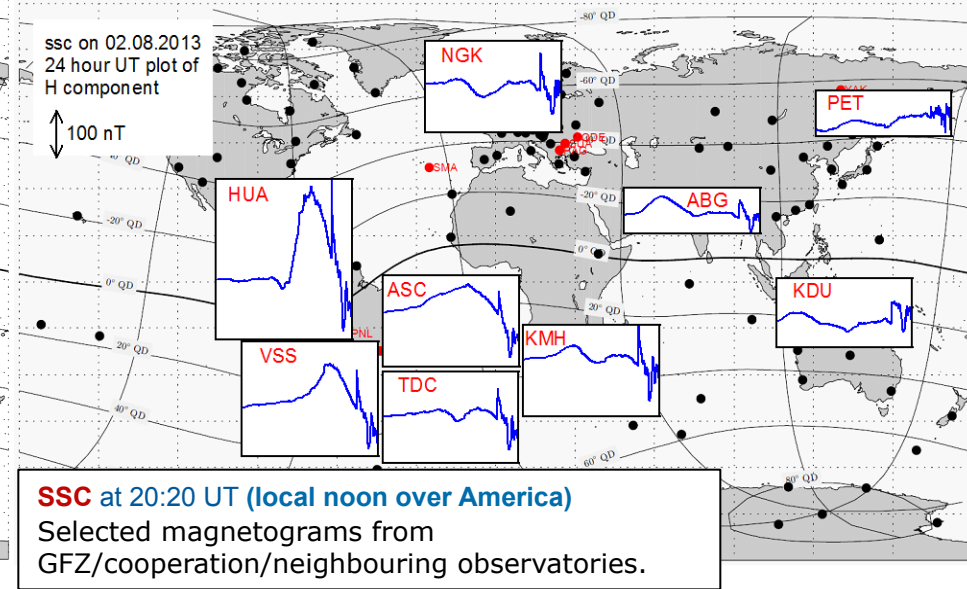
**Auroral field-aligned currents** derived from Swarm-A magnetic data (NH, local summer)

## Stations of GFZ and cooperation partners

Station of the German AWI



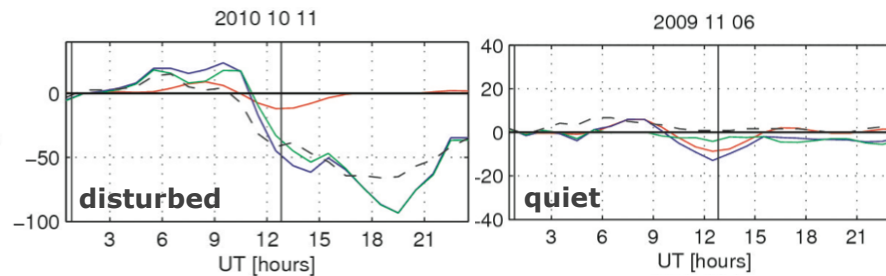
## Potential of a global network to detect sudden commencements (strong amplitudes on dayside)



**Global coverage with emphasis, e.g., on the South Atlantic Anomaly**

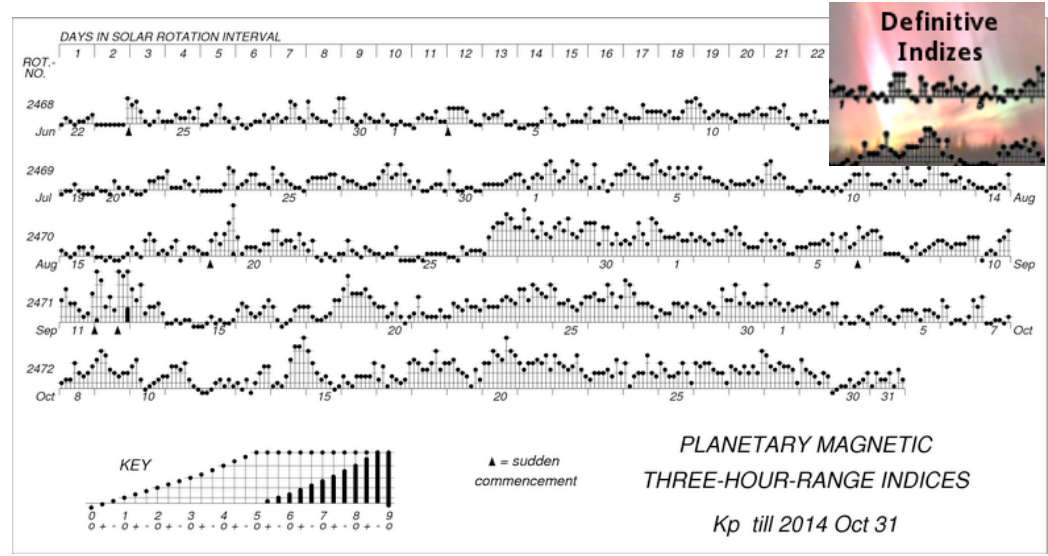
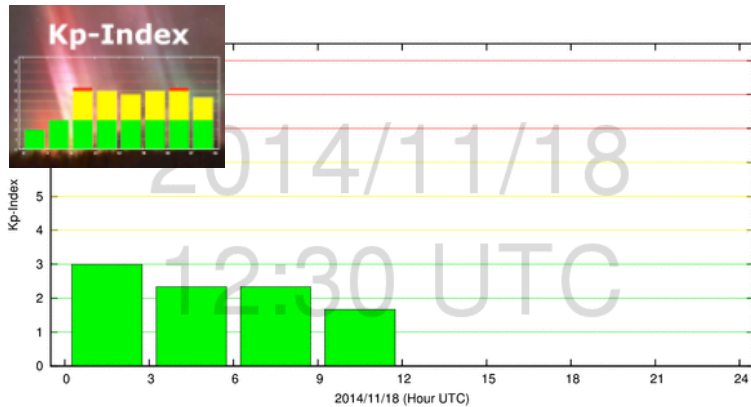
**Magnetic storm starts few hours after SSC: severe geomagnetic variation, plasma gradients and degrading GPS etc.**

**Potential for near-real time predictions of local magnetic variations during magnetic storms**  
Example TDC



**Dst provides longitudinal average!**

# Kp index service for IAGA and the International Service of Geomagnetic Indices



**Real time Kp Index** calculated from NRT geomagnetic data.

**Definitive Kp index** calculated from K-values supplied by the contributing observatories.

The Kp index is currently reviewed for being part of the ESA SSA programme.

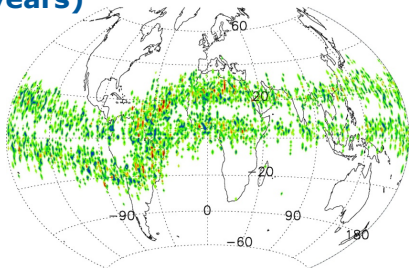
# The Swarm satellite constellation mission

## LEO-satellites for Space Weather Environment analyses and alerts

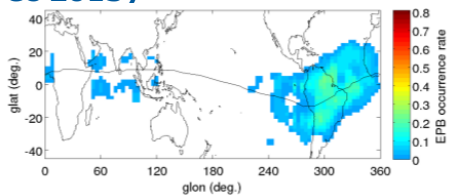


### Equatorial plasma irregularities

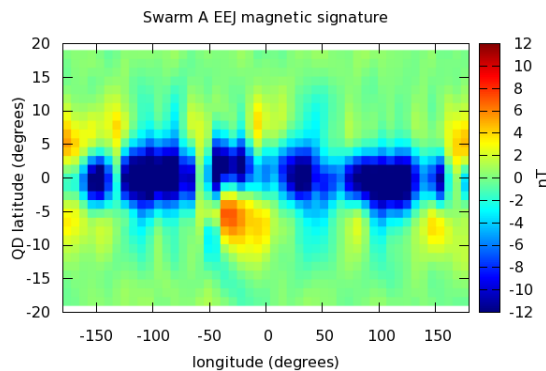
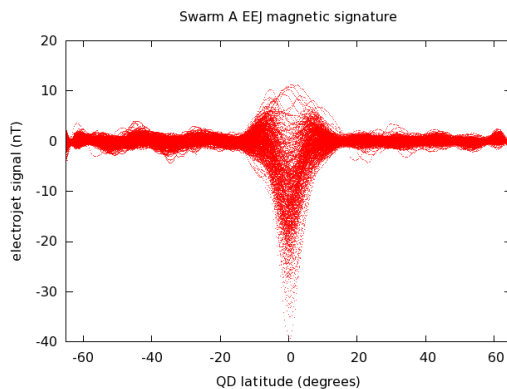
### Champ magnetic signatures (8 years)



### Swarm magnetic signatures (Dec 2013)

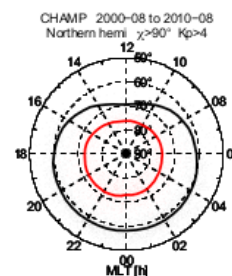
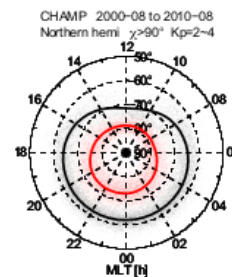
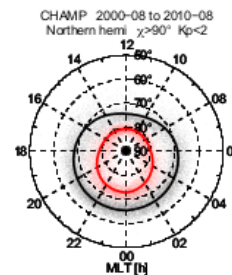


### Magnetic signatures of the Equatorial Electrojet from the Swarm mission

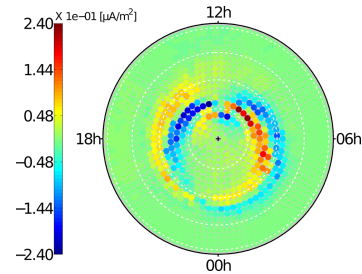
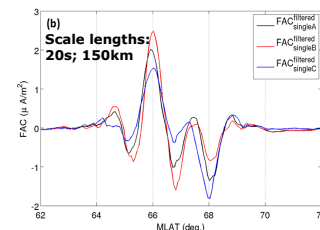
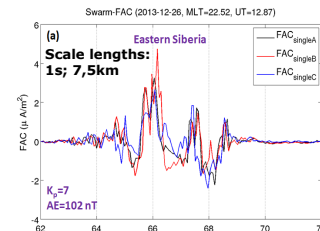


Courtesy of P. Alken

### Auroral field aligned currents and oval boundaries



CHAMP model of auroral boundaries (Xiong et al., angeo-2014)



Swarm auroral field-aligned currents