

SIDC Space Weather Briefing

06 January 2019 - 13 January 2019

Judith de Patoul
& the SIDC forecaster team



Royal Observatory
of Belgium

Solar Influences
Data analysis Centre
www.sidc.be

Summary Report

Solar activity from 2019-01-06 12:00 UT to 2019-01-13 12:00 UT

Active regions	None (excepte for AR 2732 turning over the West-limbe early in the week)
Flaring	# B-class flare: 1 # C-class flare: 0 # M-class flare: 0 # X-class flare: 0
Filaments	No filament eruption
CMEs	No Earth directed CMEs
Proton Events	At the background levels

Solar wind and geomagnetic conditions from 2019-01-06 12:00 UT to 2019-01-13 12:00 UT

Coronal Holes	Two equatorial corona holes
ICME	Text and Color to be adjusted
SW Conditions	Text and Color to be adjusted
K-indices	max K-index (Dourbes): 3.0 max Kp-index (NOAA): 4

All Quiet Alert: End on the 11th of January 2019

Solar Activity

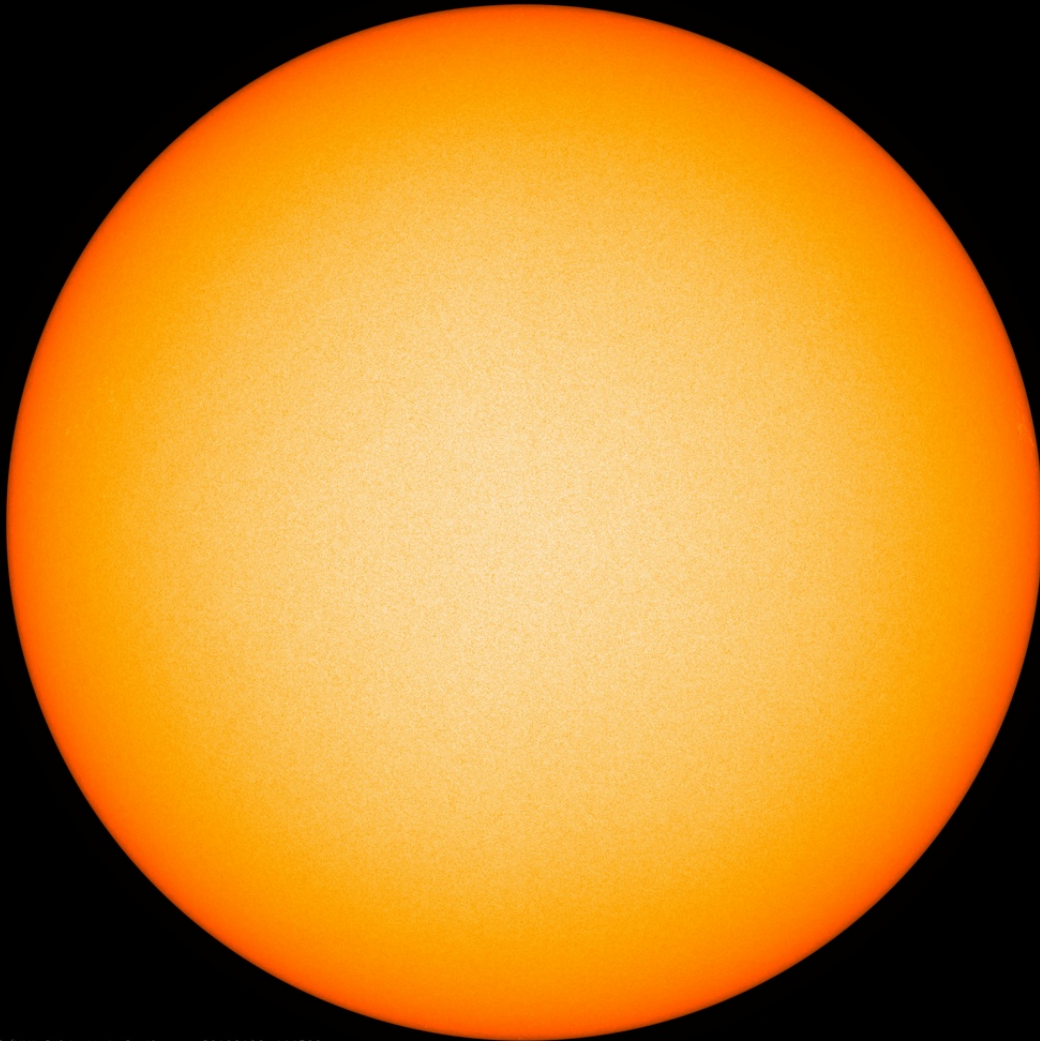


Royal Observatory
of Belgium

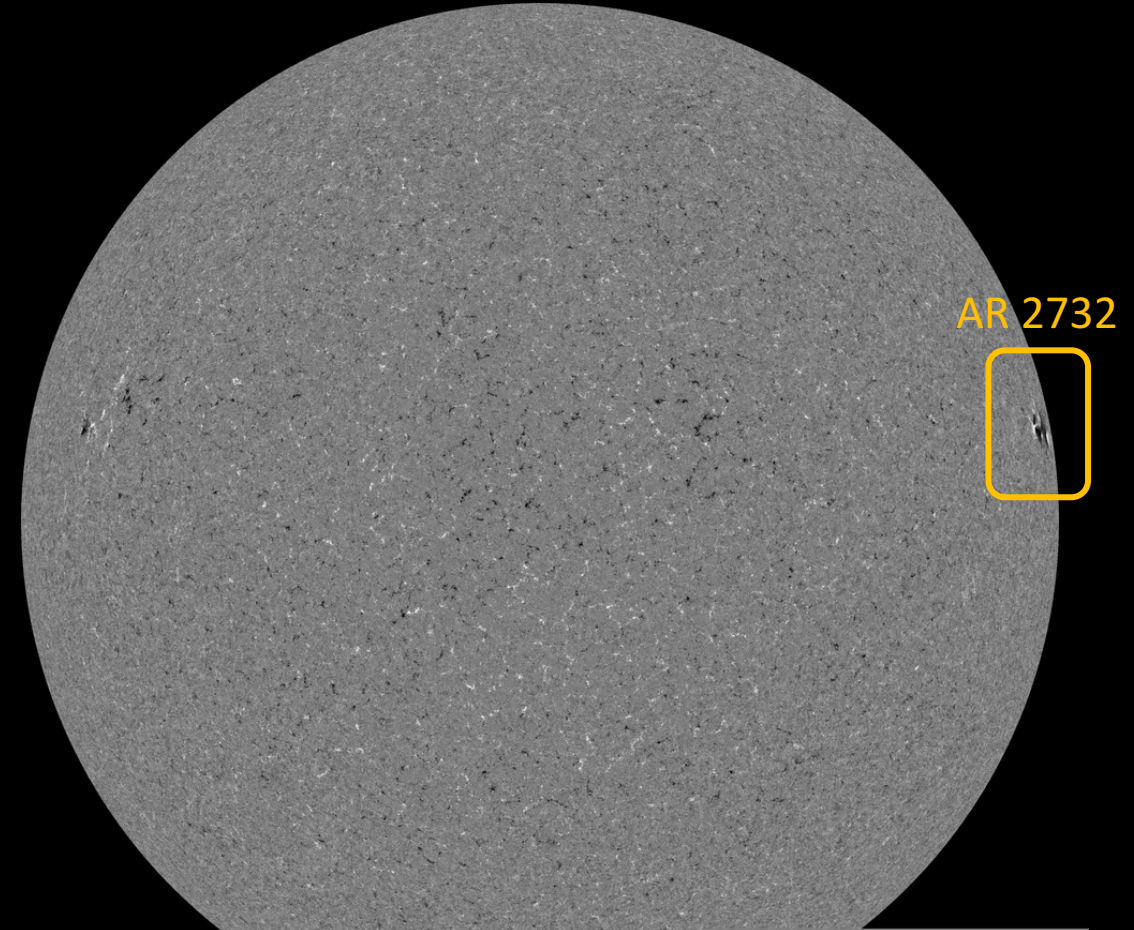
Solar Influences
Data analysis Centre
www.sidc.be

Solar active region - start of the week

SDO/HMI White Light 2019-01-06



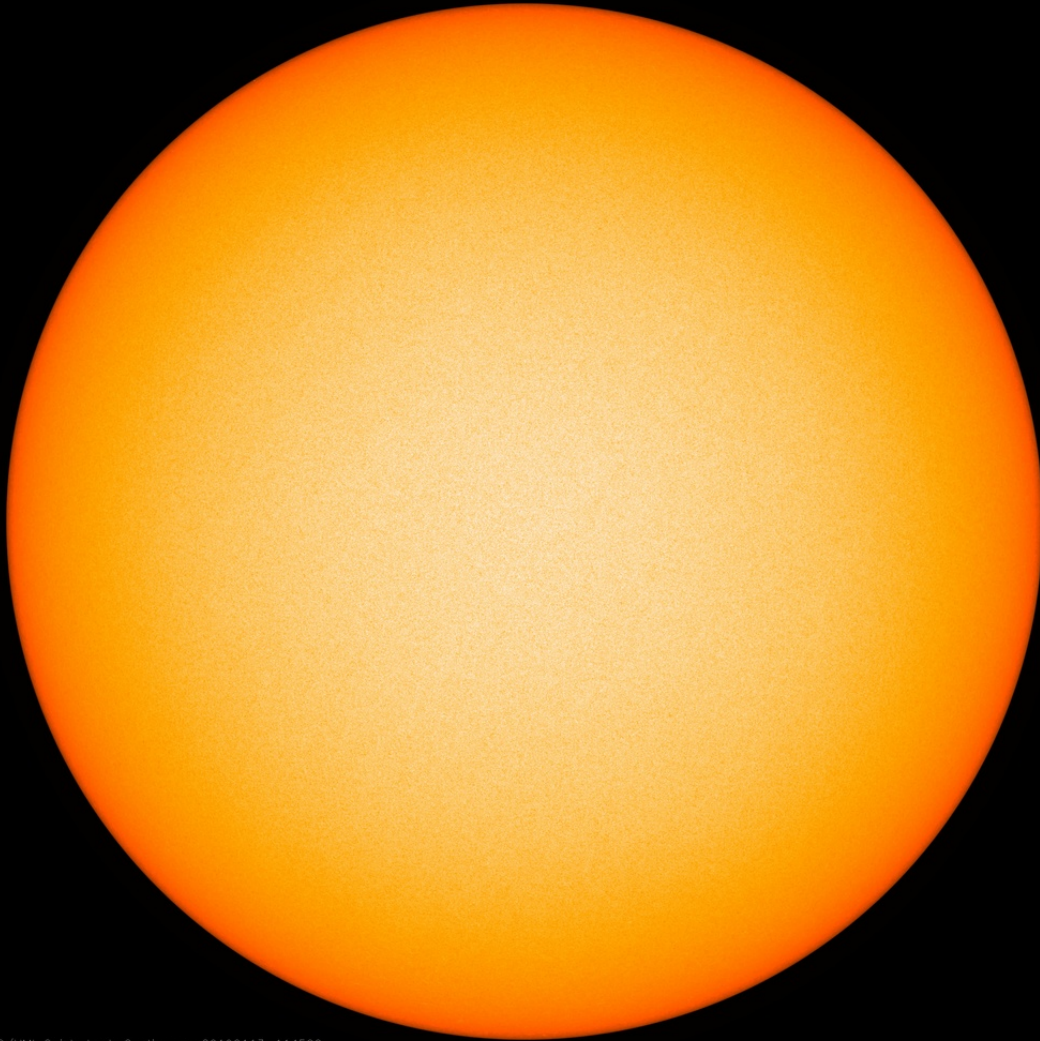
SDO/HMI Magnetogram 2019-01-06



SDO/HMI Quick-Look Continuum: 20190106_111500

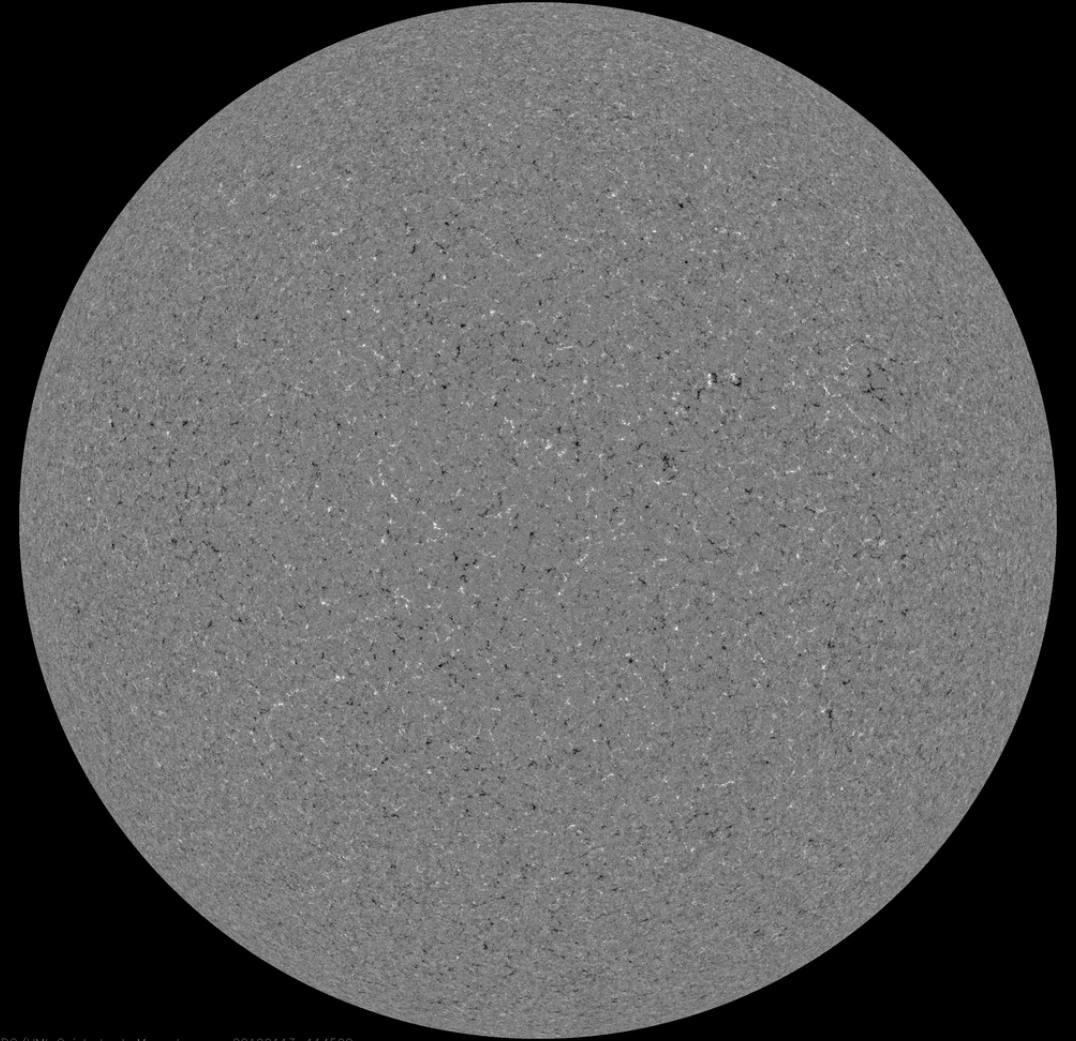
Solar active region - end of the week

SDO/HMI White Light 2019-01-13



SDO/HMI Quick-Look Continuum: 20190113_114500

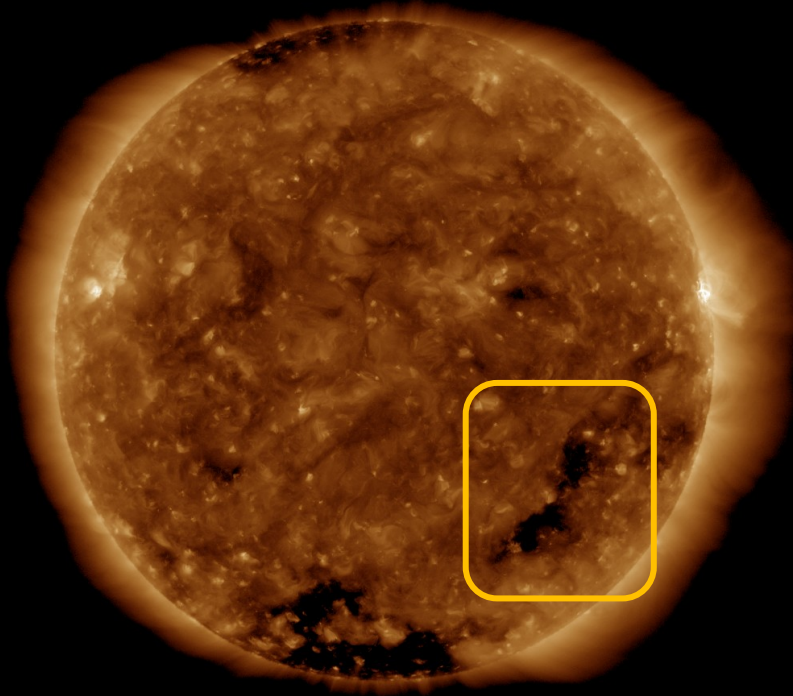
SDO/HMI Magnetogram 2019-01-13



SDO/HMI Quick-Look Magnetogram: 20190113_114500

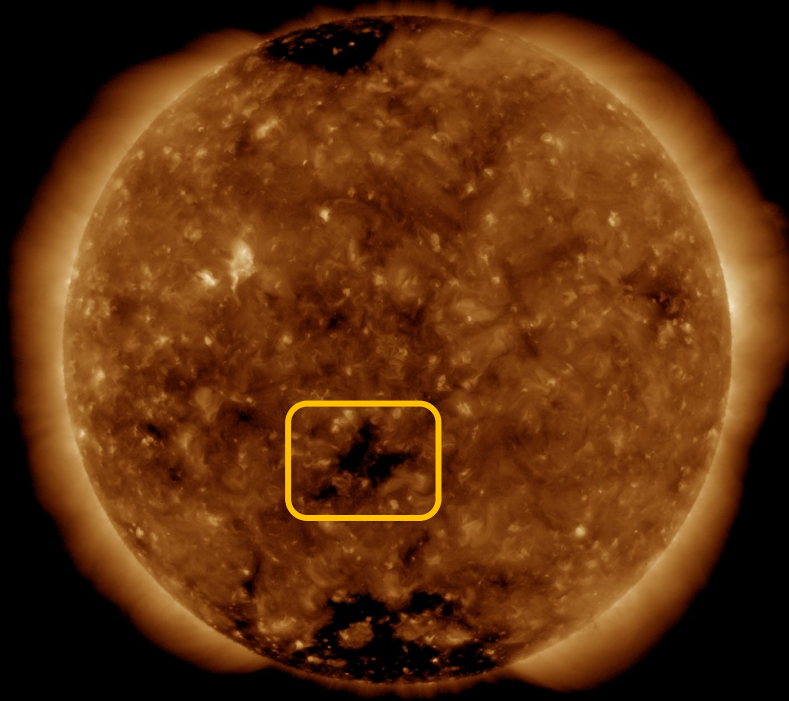
Solar active region & Coronal hole

SDO/AIA 19.3 nm
2019-01-06



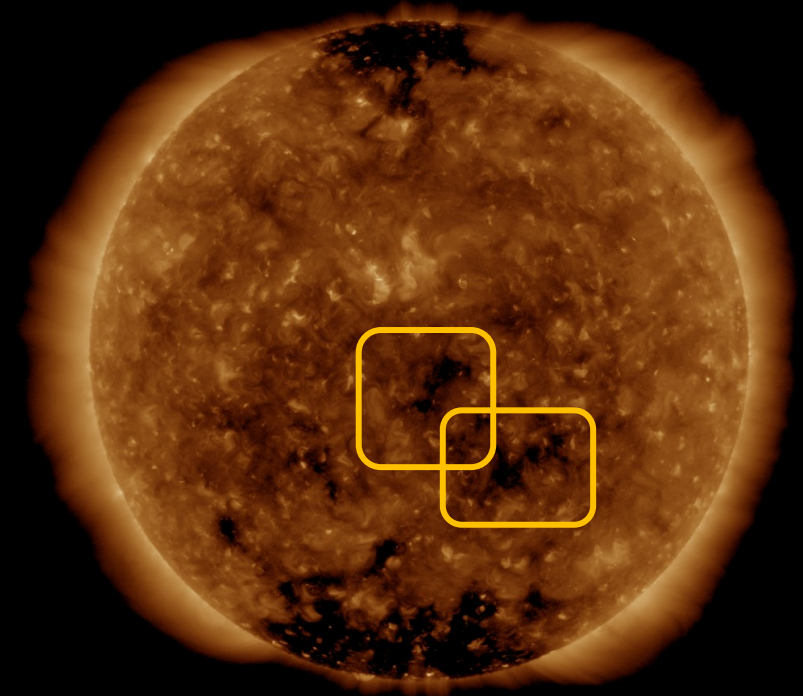
SDO/AIA 193 2019-01-06 11:41:17 UT

SDO/AIA 19.3 nm
2019-01-08



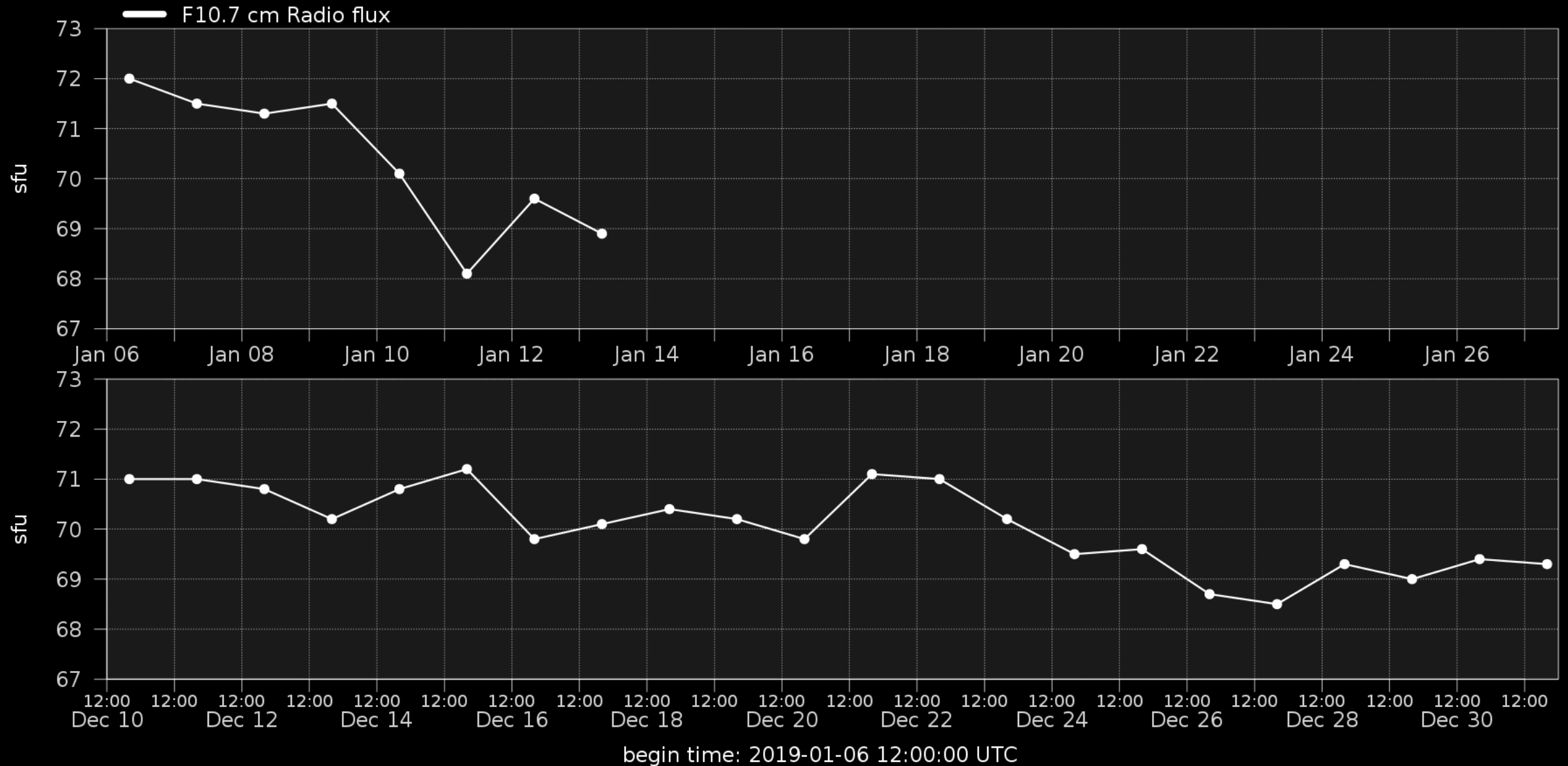
SDO/AIA 193 2019-01-08 12:11:17 UT

SDO/AIA 19.3 nm
2019-01-10

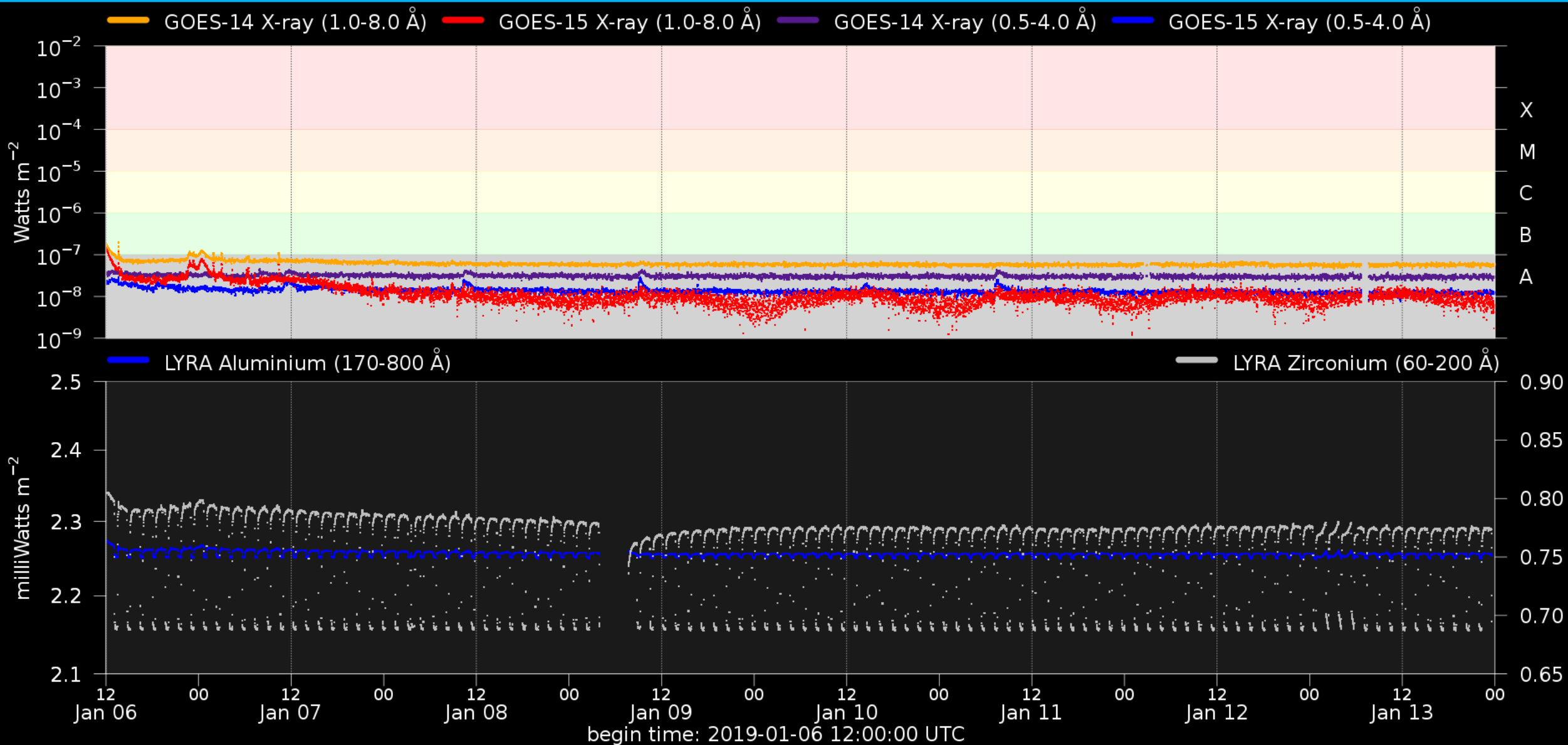


SDO/AIA 193 2019-01-10 12:07:29 UT

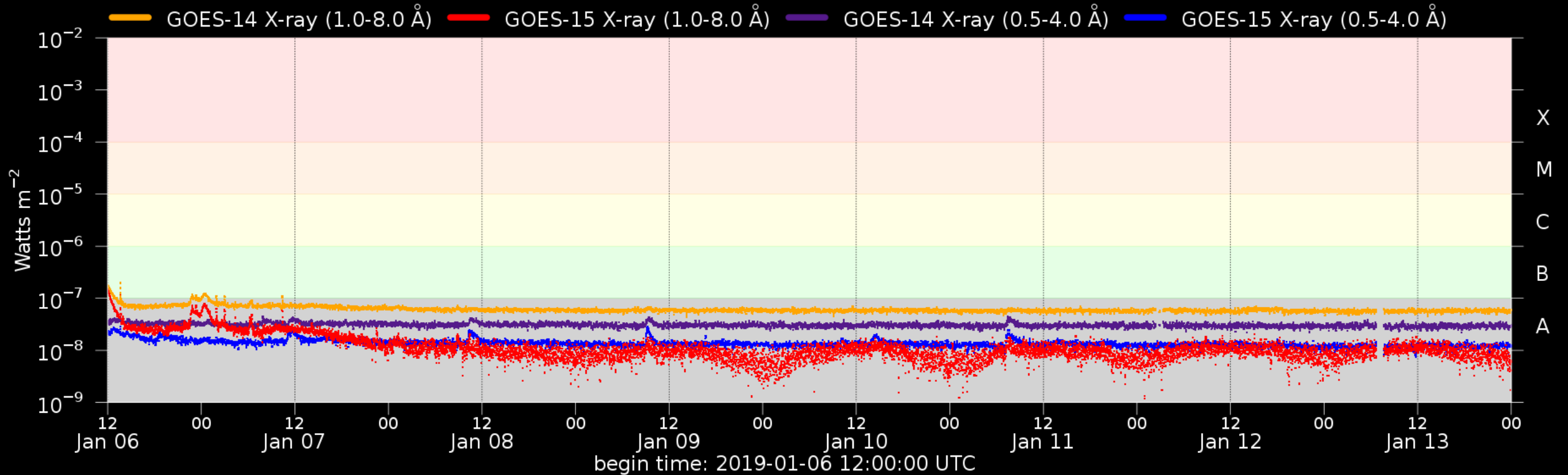
Solar F10.7cm radio flux



Solar X-Ray and UV flux



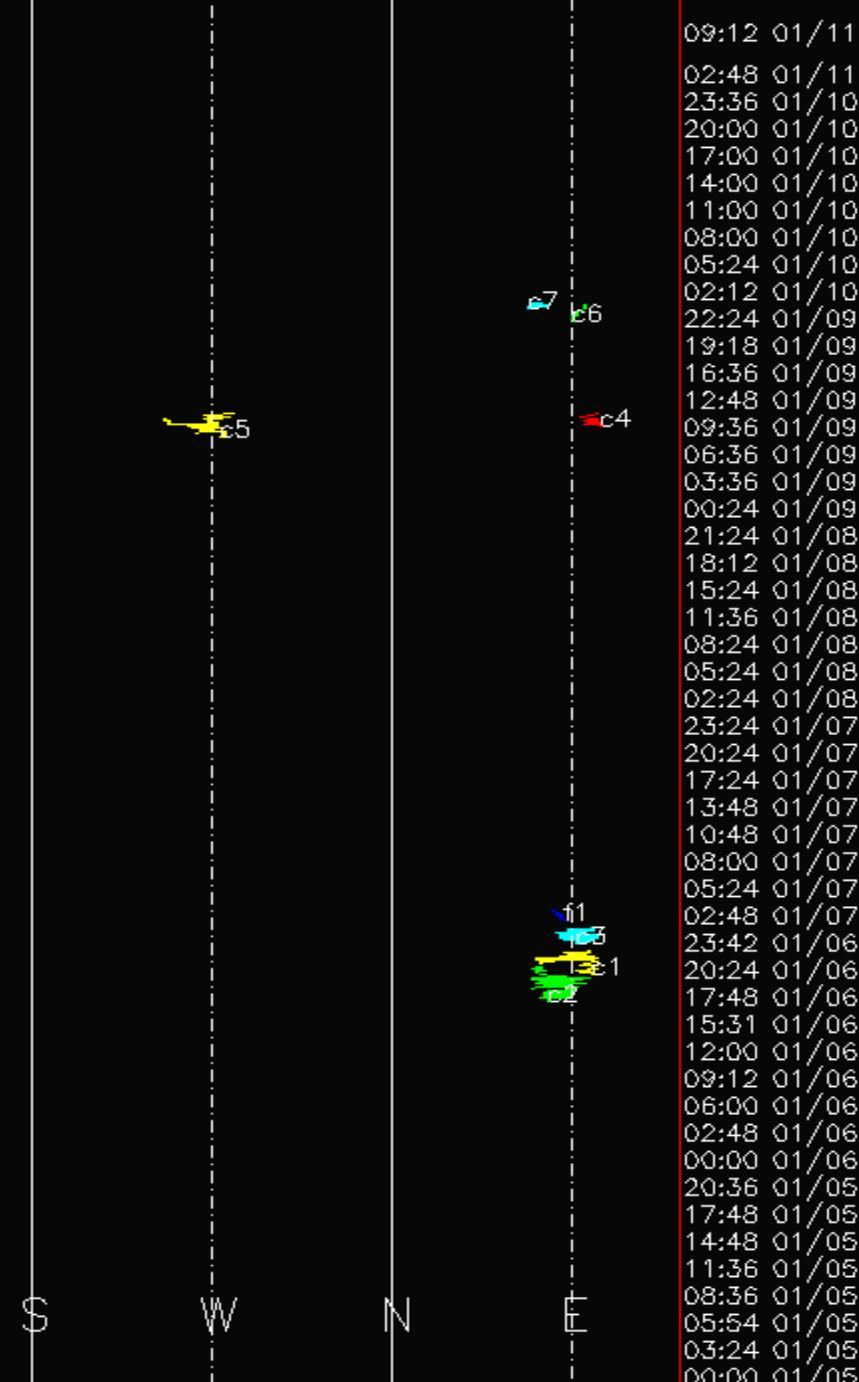
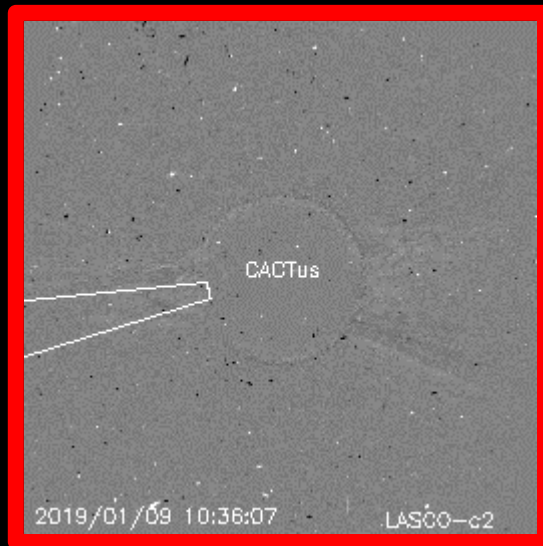
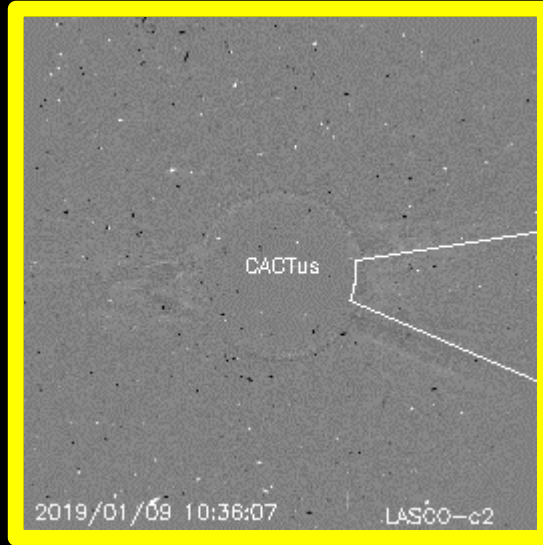
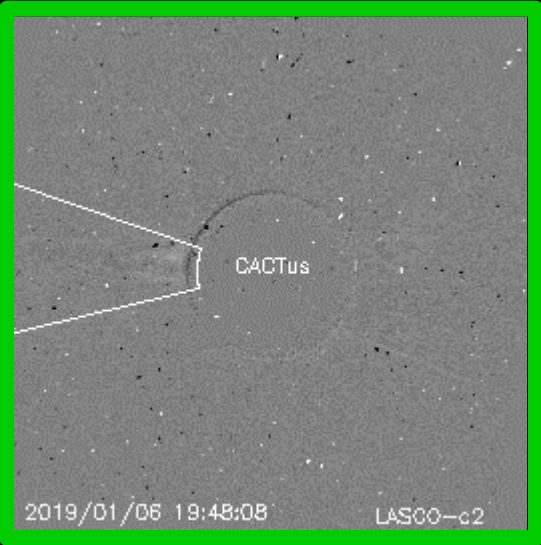
Flaring activity



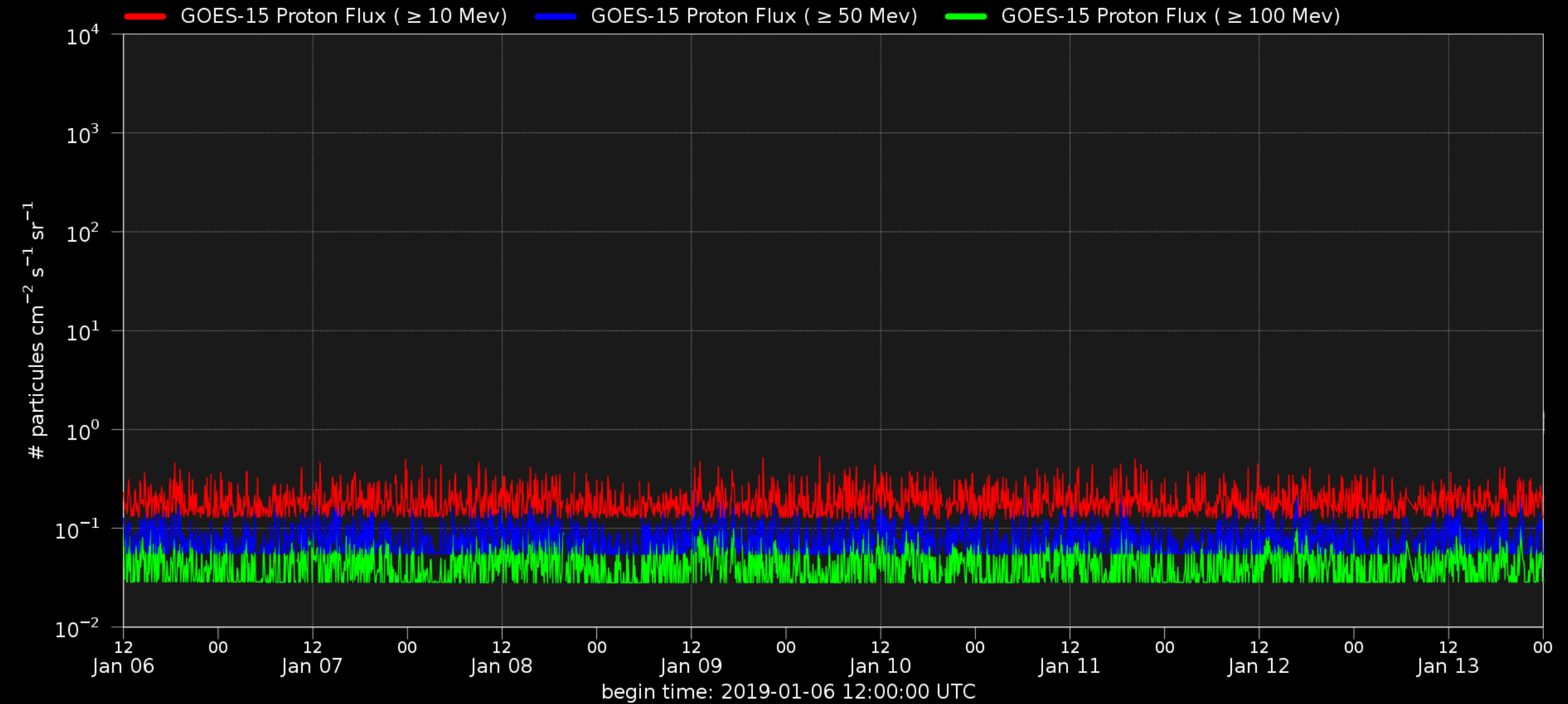
Probabilities (%) and occurrences (#) of B/C/M/X-flares issued at 12:30 and over the next 24h:

Issue date	2019-01-06	2019-01-07	2019-01-08	2019-01-09	2019-01-10	2019-01-11	2019-01-12	2019-01-13
Probability	--- 20 05 01	--- 04 01 01	--- 01 01 01	--- 01 01 01	--- 01 01 01	--- 01 01 01	--- 01 01 01	--- 01 01 01
Observed	01 00 00 00	00 00 00 00	00 00 00 00	00 00 00 00	00 00 00 00	00 00 00 00	00 00 00 00	00 00 00 00

Coronal Mass Ejection



Solar proton flux

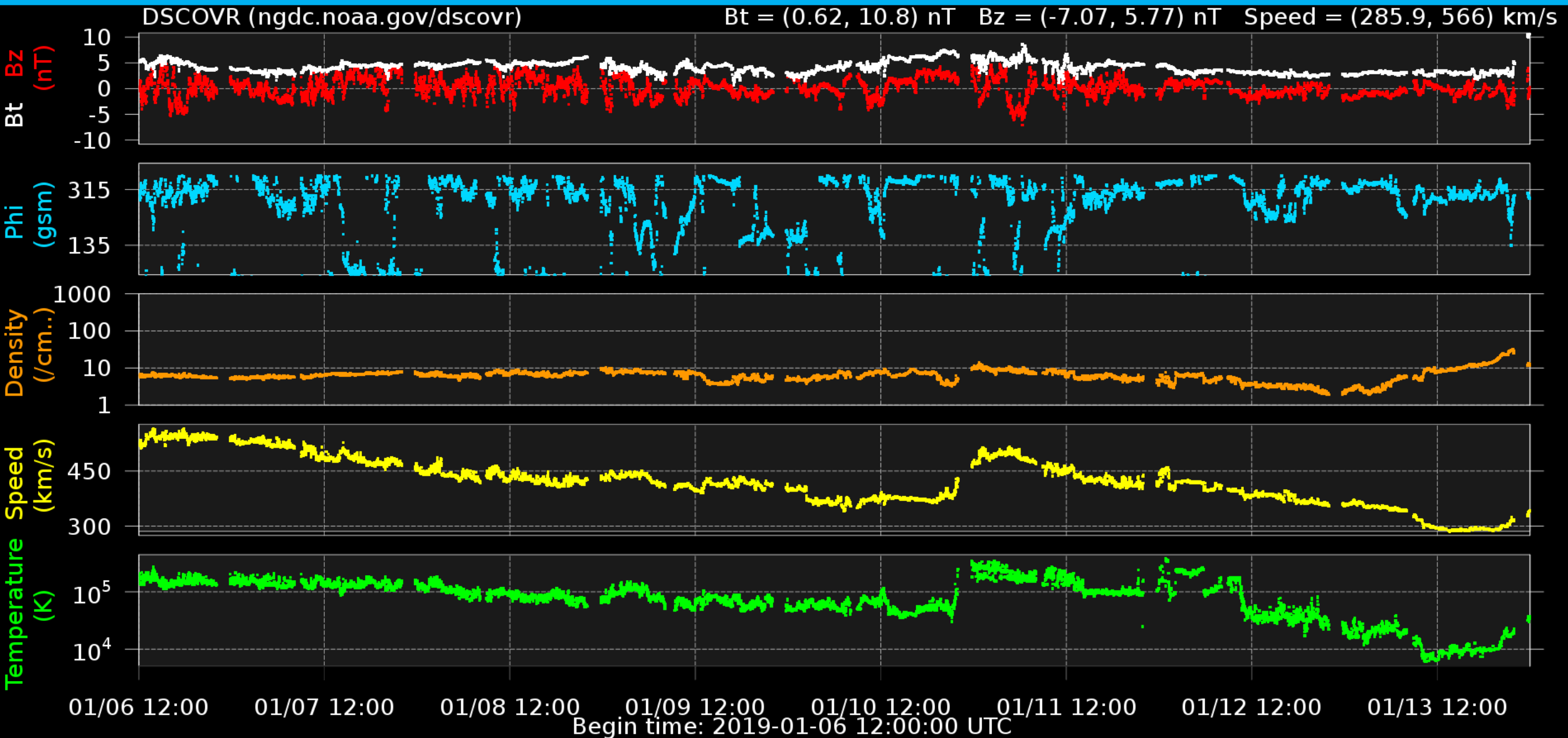


Solar Wind and Geomagnetic Activity

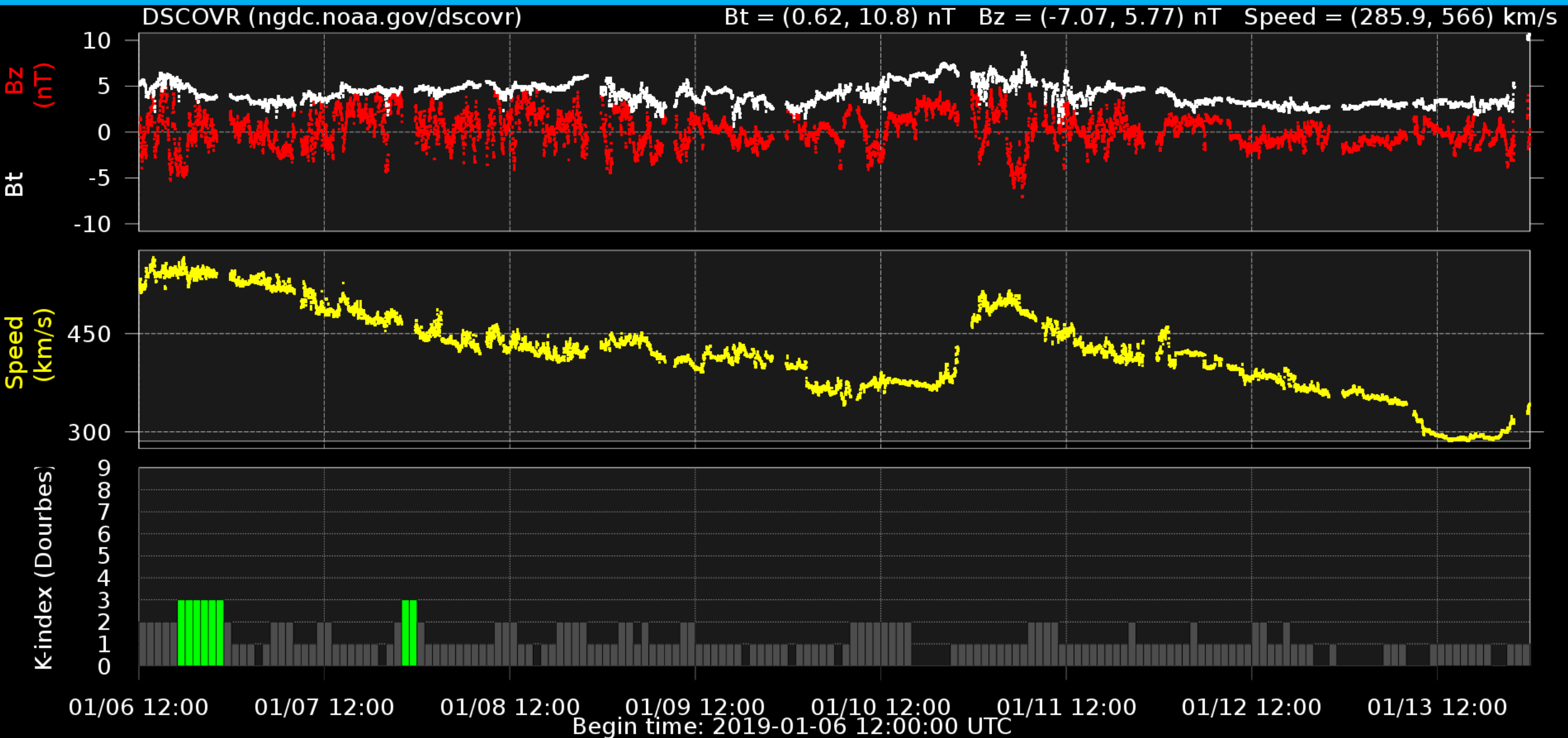


Solar Influences
Data analysis Centre
www.sidc.be

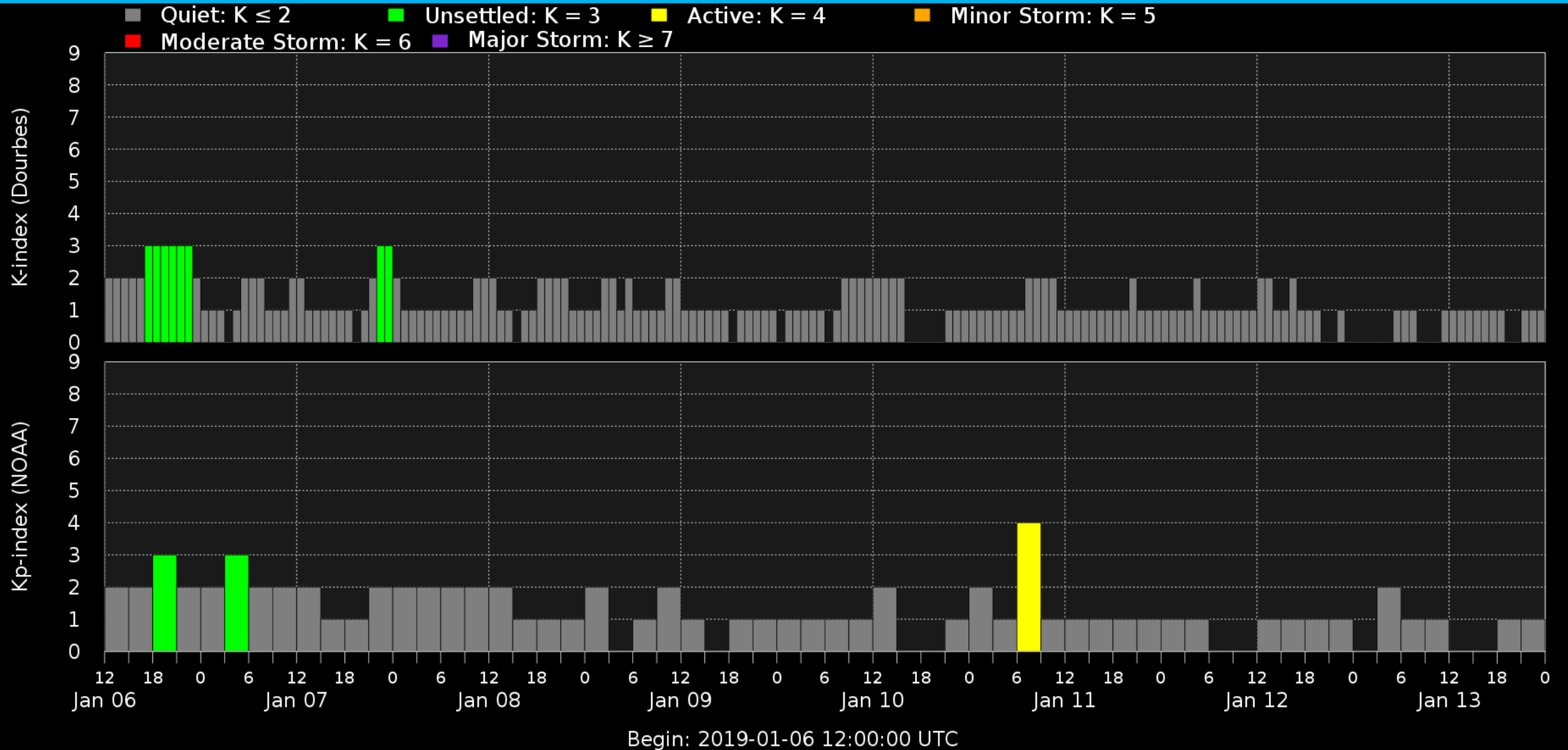
Solar wind parameters (DSCOVR data)



Solar wind parameters & K-index (DSCOVR/Dourbes)



Geomagnetic activity (K-indexes)



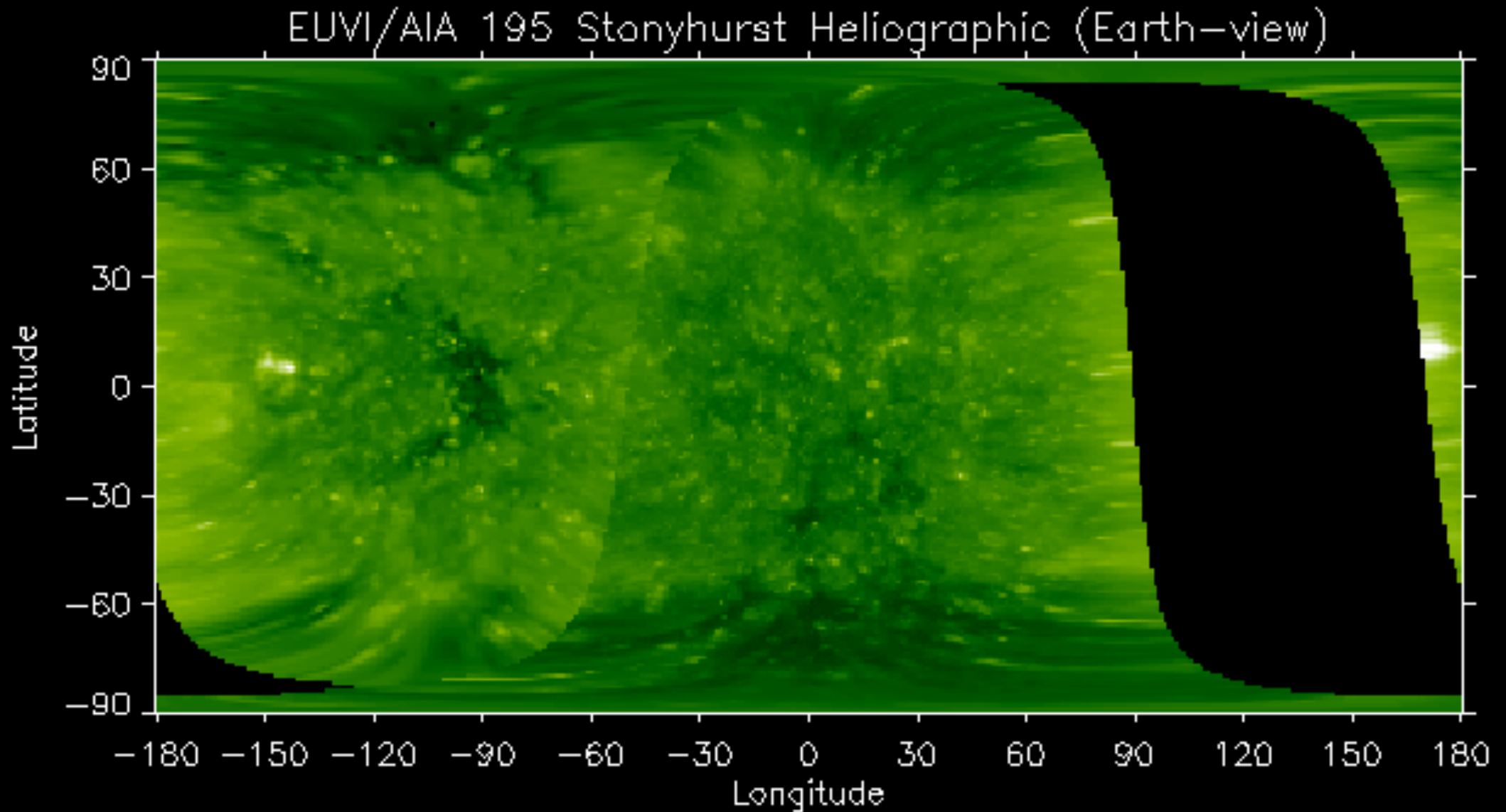
Outlook



Royal Observatory
of Belgium

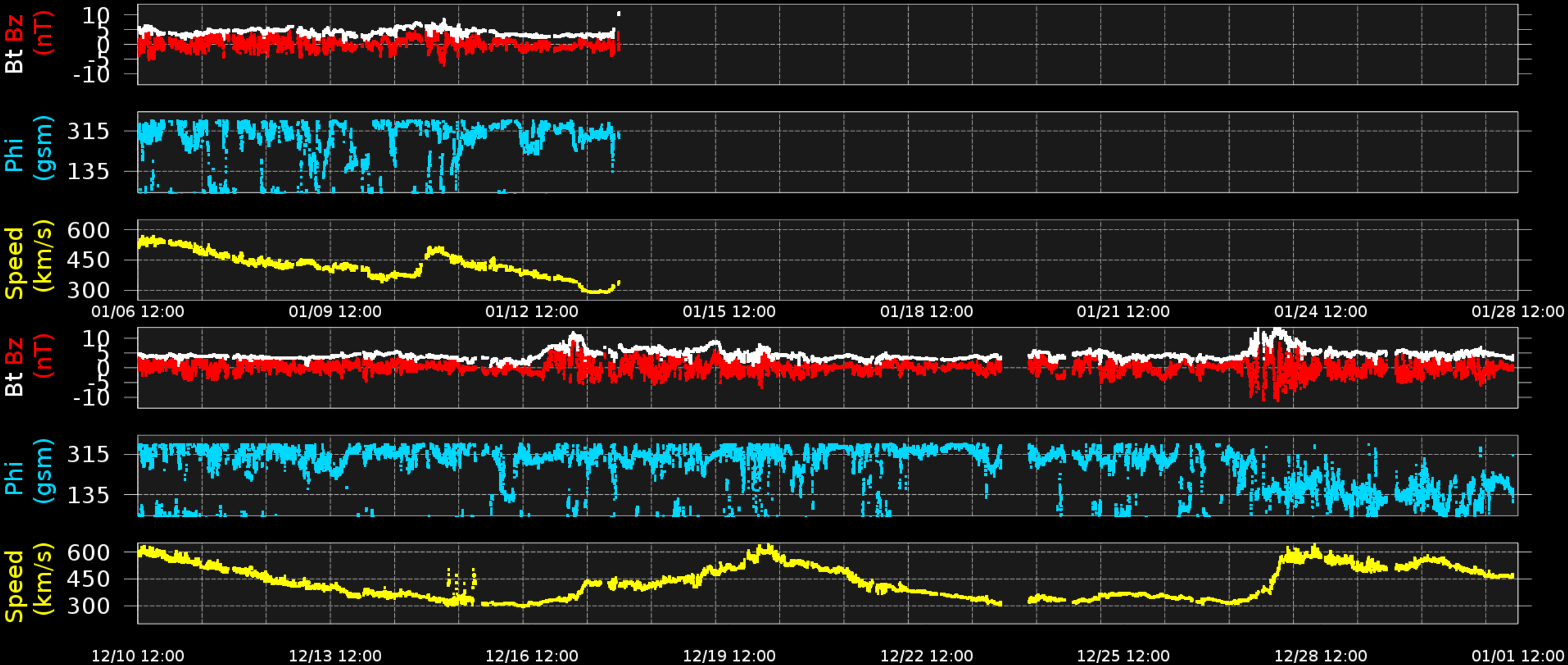
Solar Influences
Data analysis Centre
www.sidc.be

Outlook: Solar activity



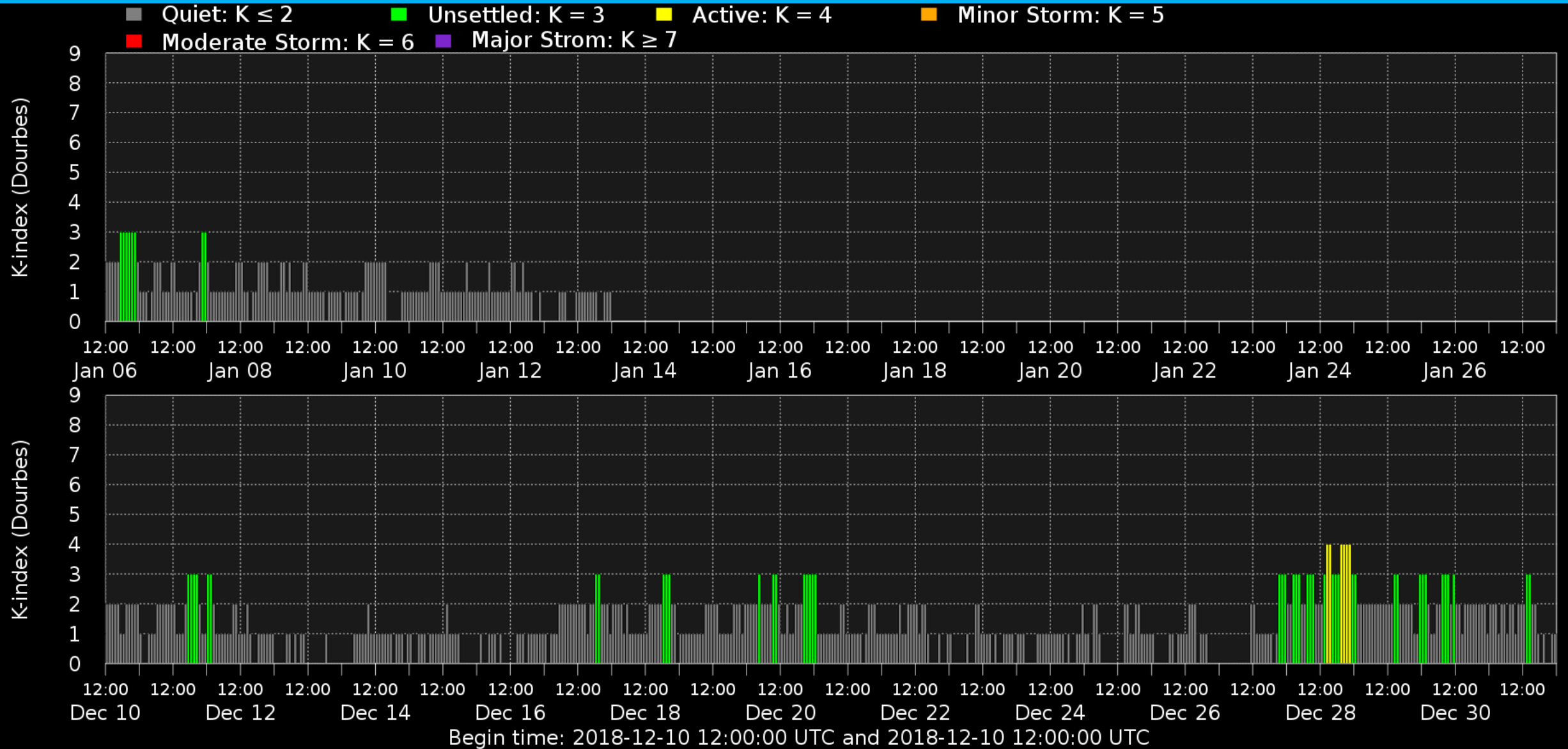
Outlook: Solar wind

DSCOVR (ngdc.noaa.gov/dscovr)



Begin time: 2018-12-10 12:00:00 UTC

Outlook: Geomagnetic activity



SIDC Space Weather Briefing

See you at our next briefing!

Or visit us at www.sidc.be



Royal Observatory
of Belgium

Solar Influences
Data analysis Centre
www.sidc.be