

SIDC Space Weather Briefing

19 January 2020 - 26 January 2020

Jennifer O'Hara

& the SIDC forecaster team



Royal Observatory
of Belgium

Solar Influences
Data analysis Centre
www.sidc.be

Summary Report

Solar activity from 2020-01-19 12:00 UT to 2020-01-26 12:00 UT

Active regions	NOAA AR2757
Flaring	# B-class flare: 0 # C-class flare: 0 # M-class flare: 0 # X-class flare: 0 (measured by GOES-16)
Filaments	No significant filament eruptions
CMEs	One CME observed by STEREO. Earth directed component unclear.
Proton Events	None

Solar wind and geomagnetic conditions from 2020-01-19 12:00 UT to 2020-01-26 12:00 UT

Coronal Holes	Patchy extension to southern polar coronal hole.
ICME	None observed
SW Conditions	Quiet to Unsettled
K-indices	max K-index (Dourbes): 3.0 max Kp-index (NOAA): 3

All Quiet Alert: Off

Solar Activity

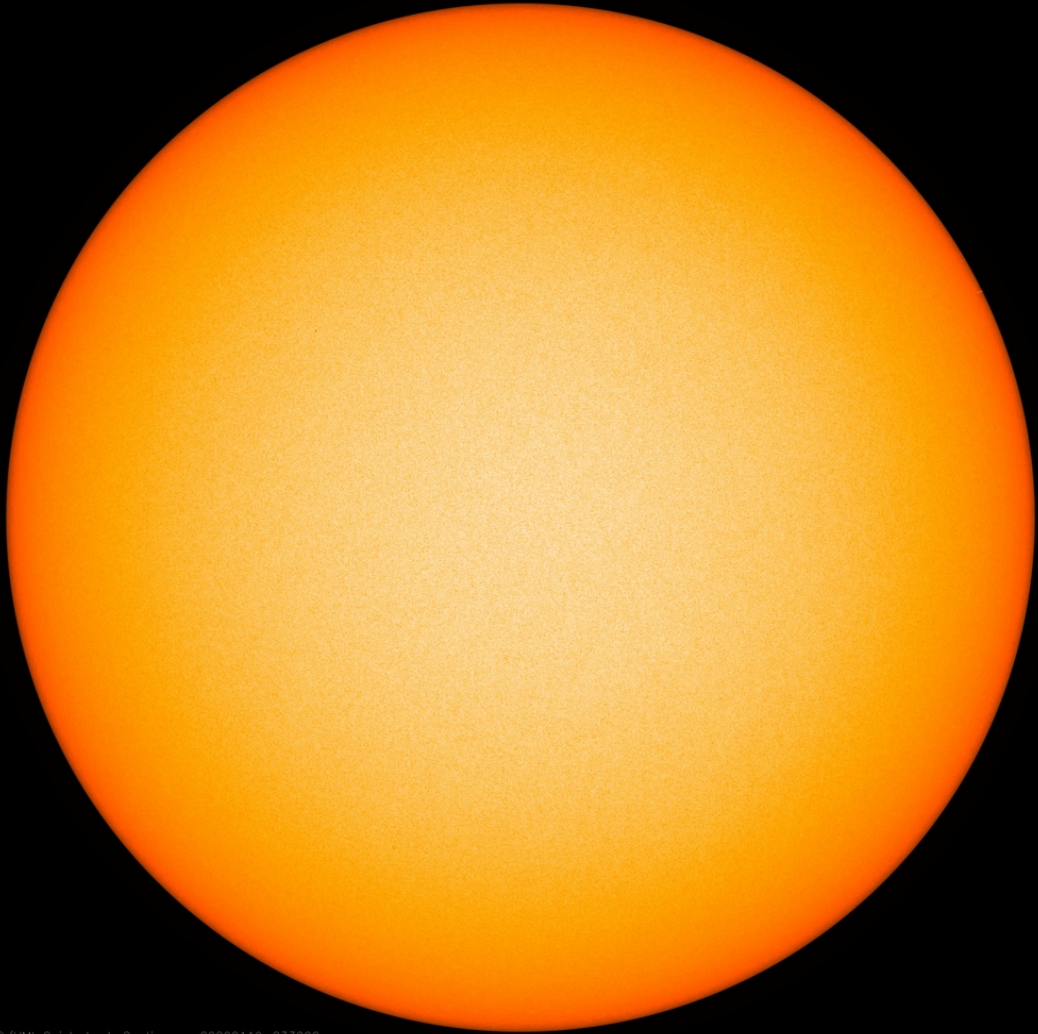


Royal Observatory
of Belgium

Solar Influences
Data analysis Centre
www.sidc.be

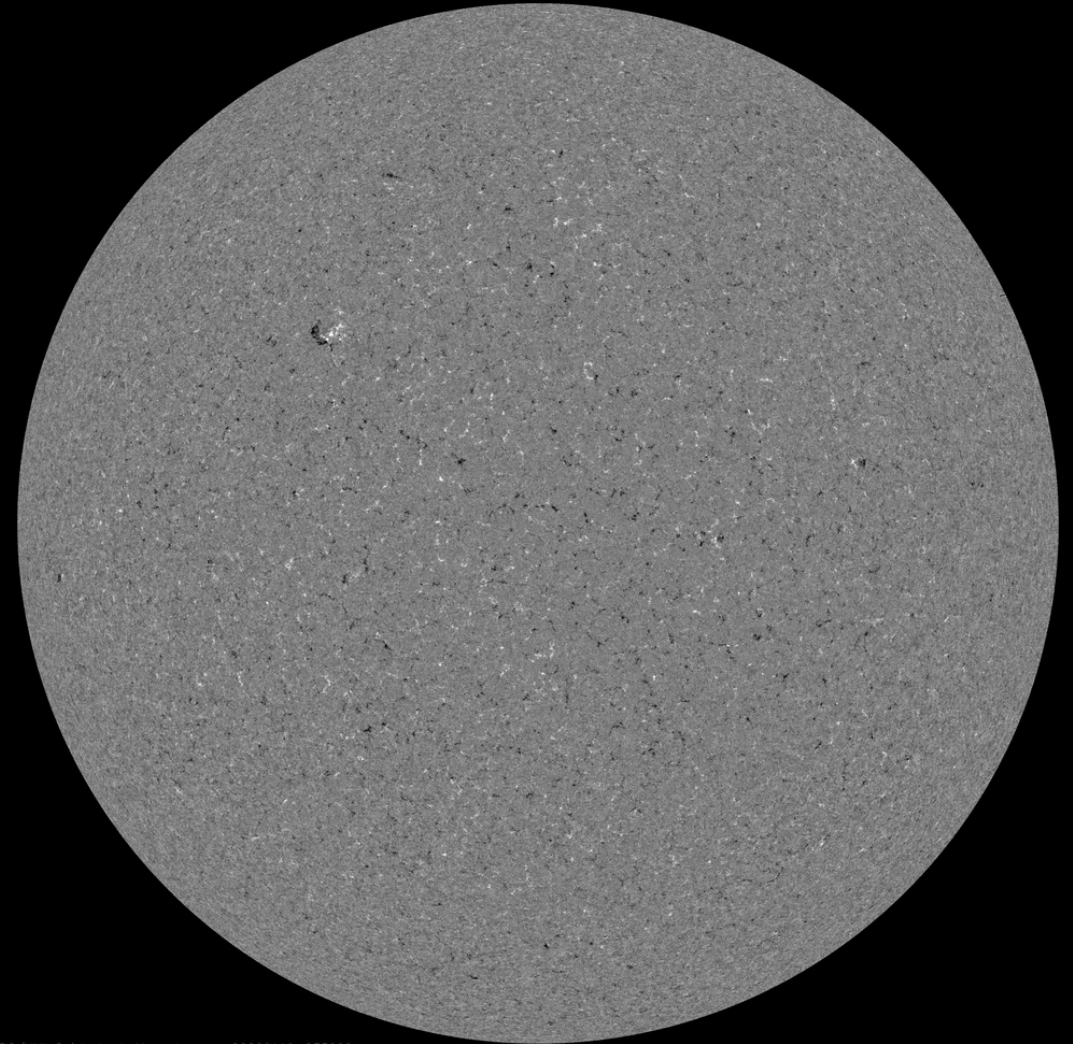
Solar active region - start of the week

SDO/HMI White Light 2020-01-19



SDO/HMI Quick-Look Continuum: 20200119_233000

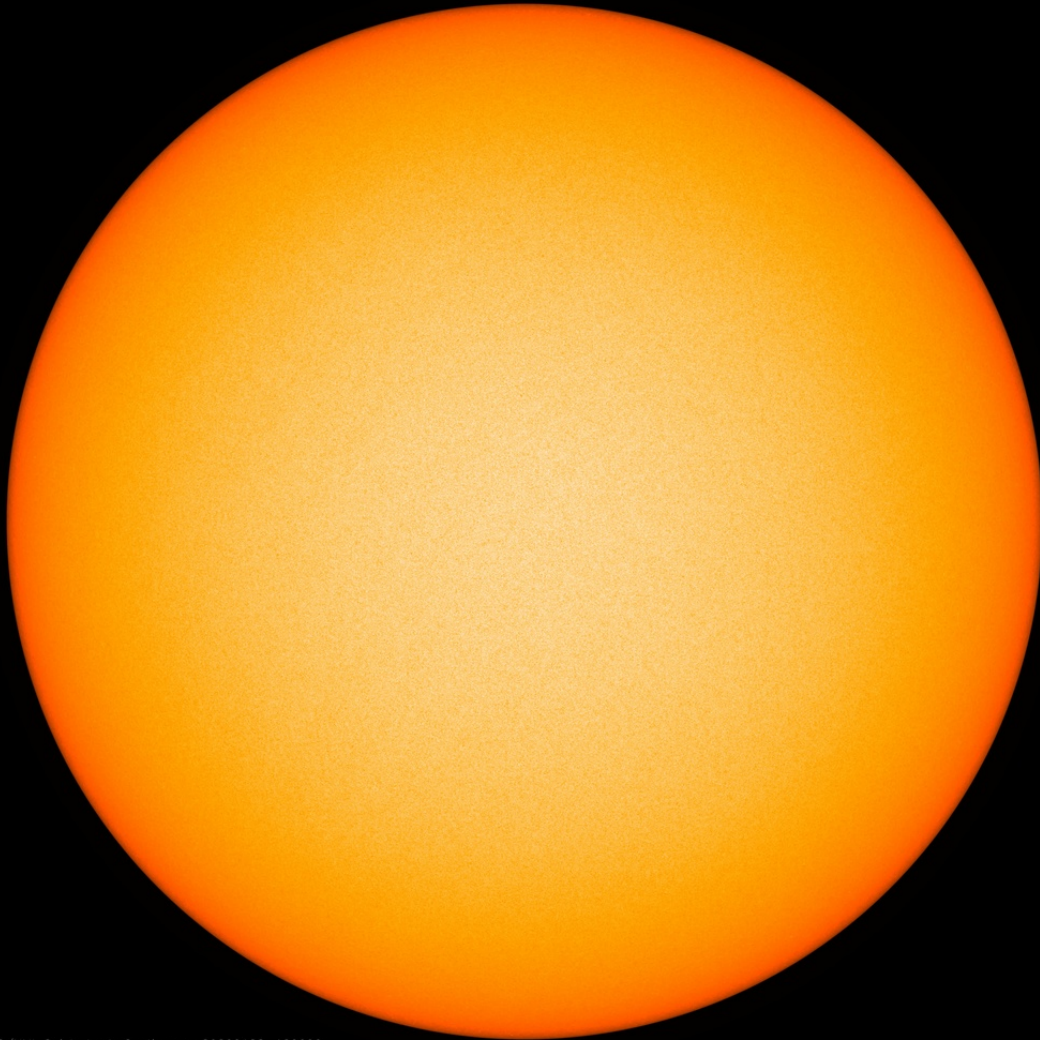
SDO/HMI Magnetogram 2020-01-19



SDO/HMI Quick-Look Magnetogram: 20200119_233000

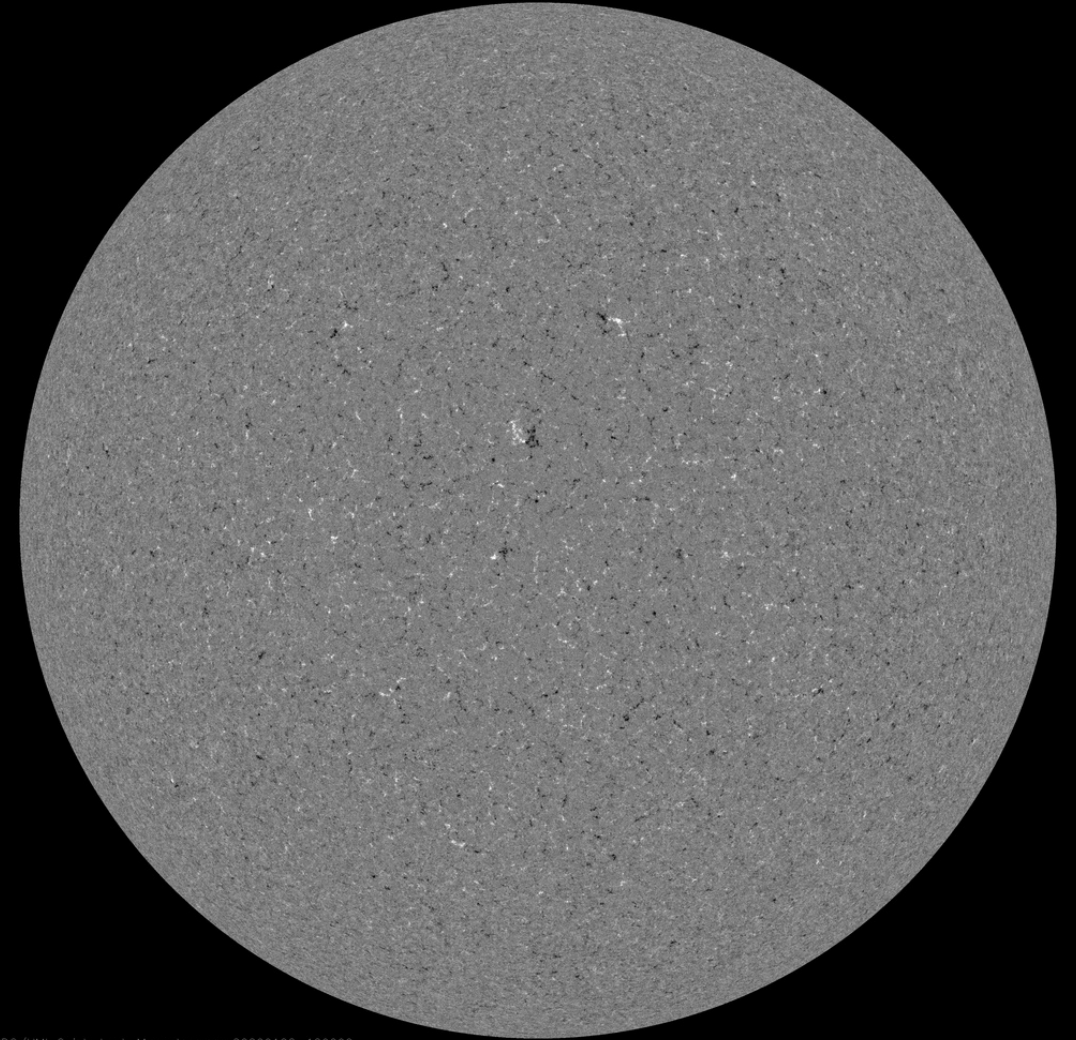
Solar active region - middle of the week

SDO/HMI White Light 2020-01-22



SDO/HMI Quick-Look Continuum: 20200122_120000

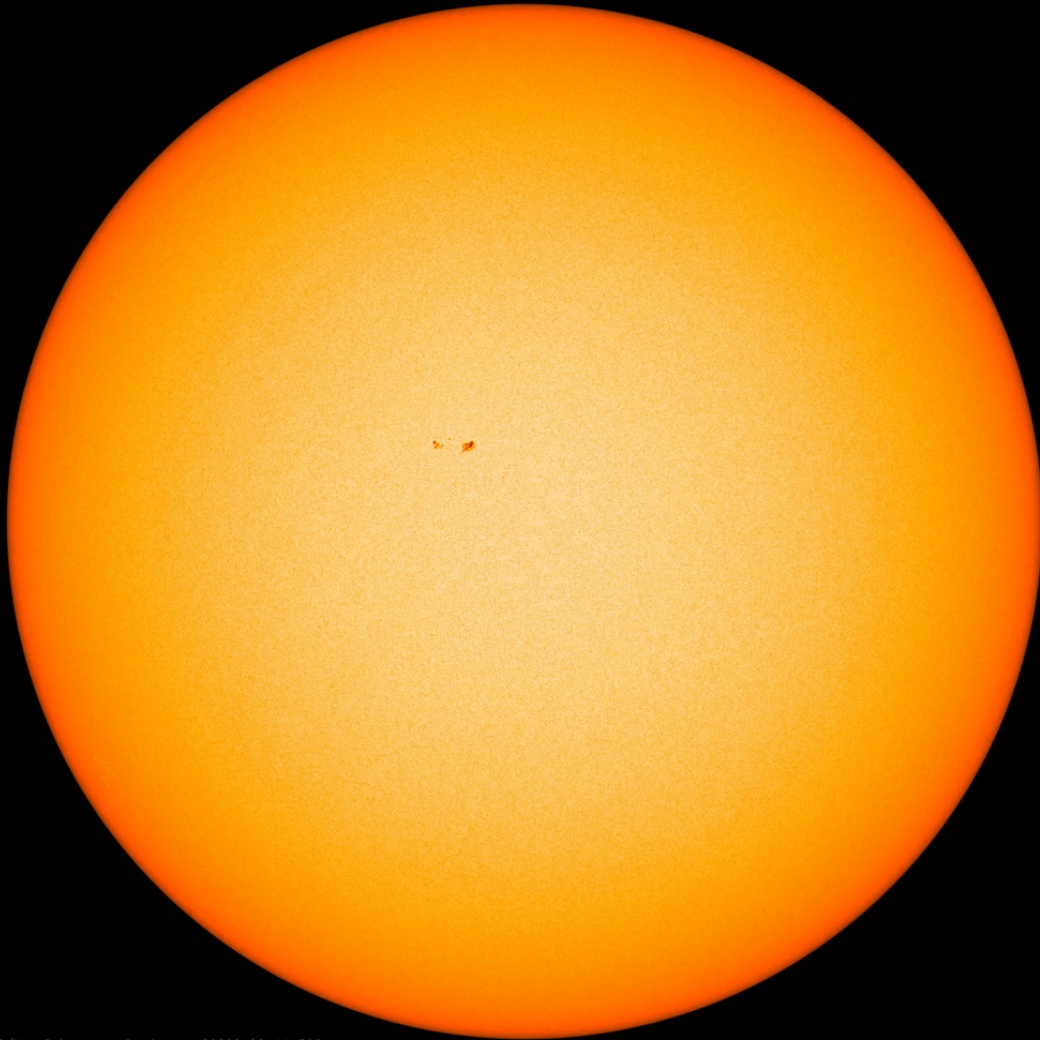
SDO/HMI Magnetogram 2020-01-22



SDO/HMI Quick-Look Magnetogram: 20200122_120000

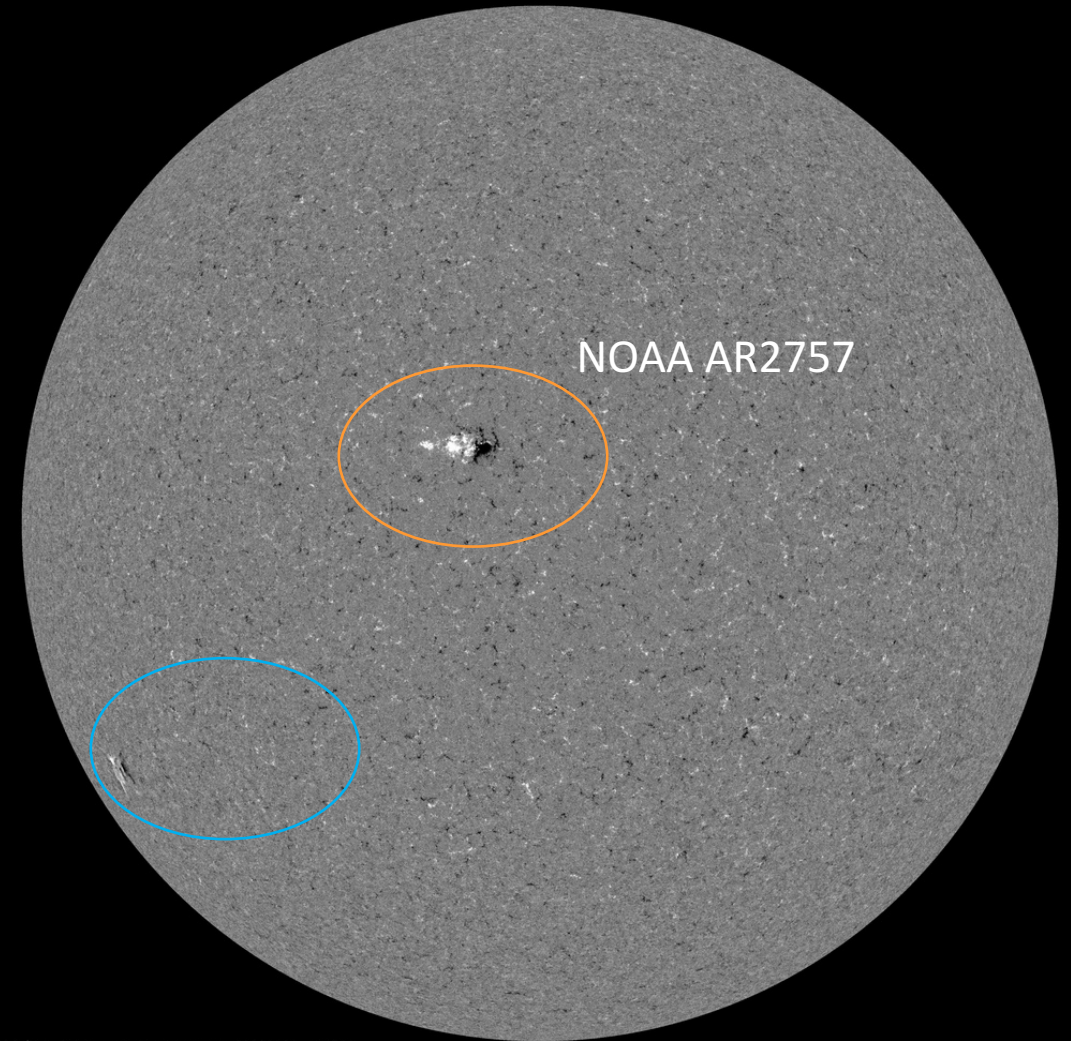
Solar active region - end of the week

SDO/HMI White Light 2020-01-26



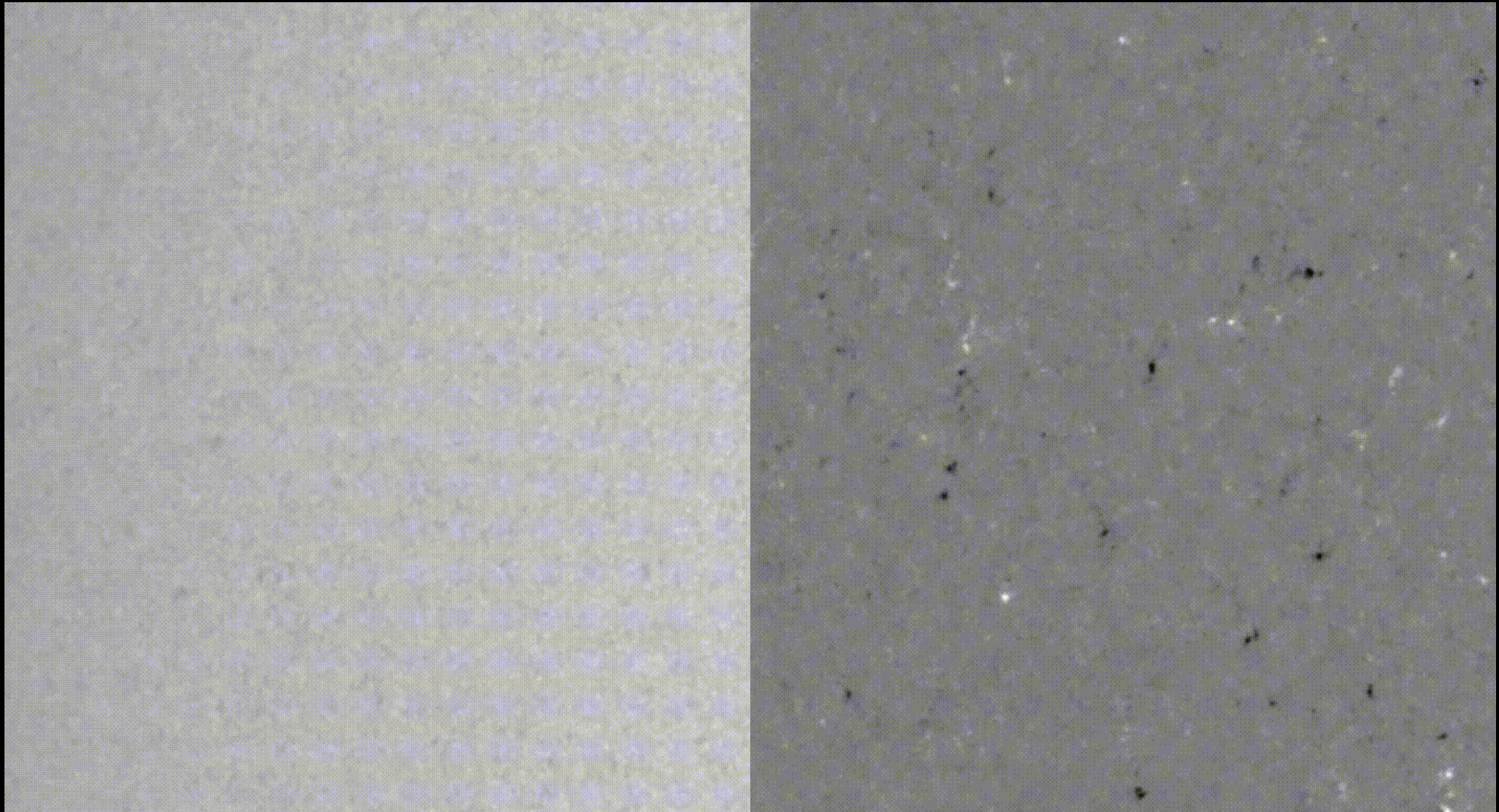
SDO/HMI Quick-Look Continuum: 20200126_114500

SDO/HMI Magnetogram 2020-01-26



SDO/HMI Quick-Look Magnetogram: 20200126_114500

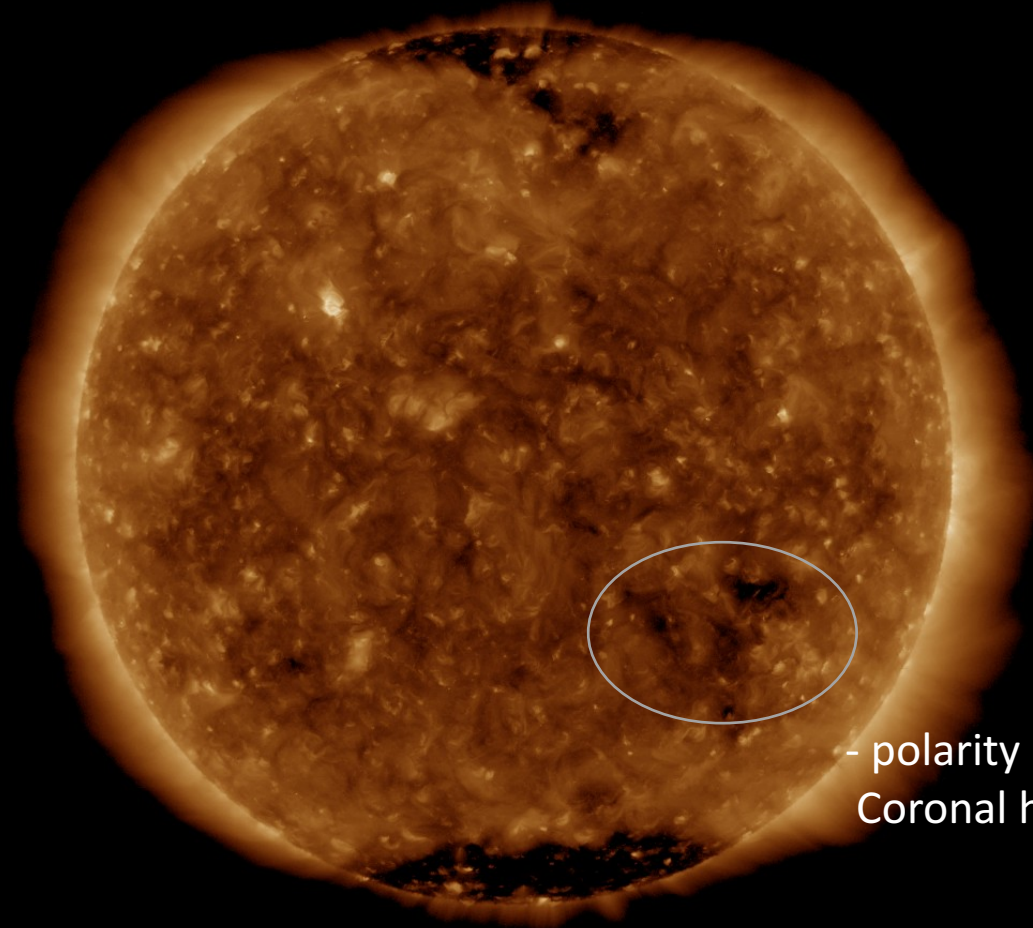
Solar active region NOAA AR2757



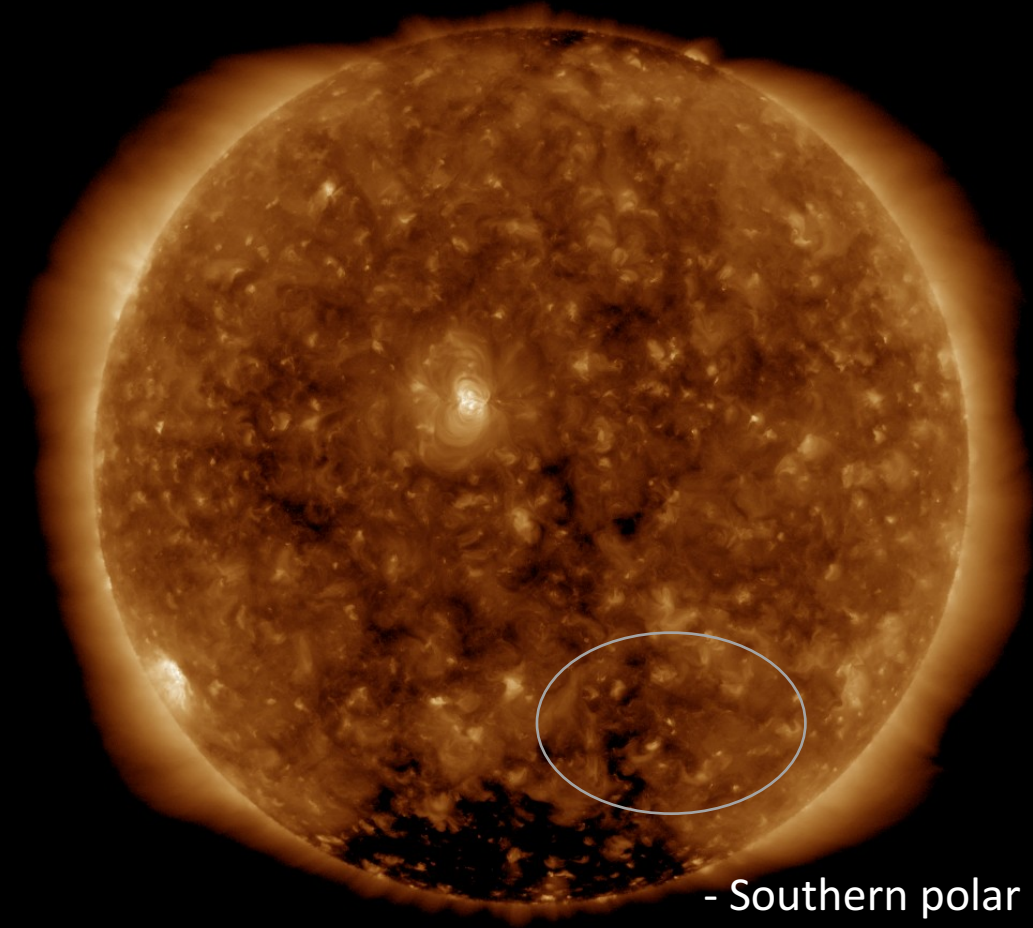
Solar active region & Coronal hole

SDO/AIA 19.3 nm 2020-01-19

SDO/AIA 19.3 nm 2020-01-26



- polarity
Coronal hole



- Southern polar
Coronal hole extension

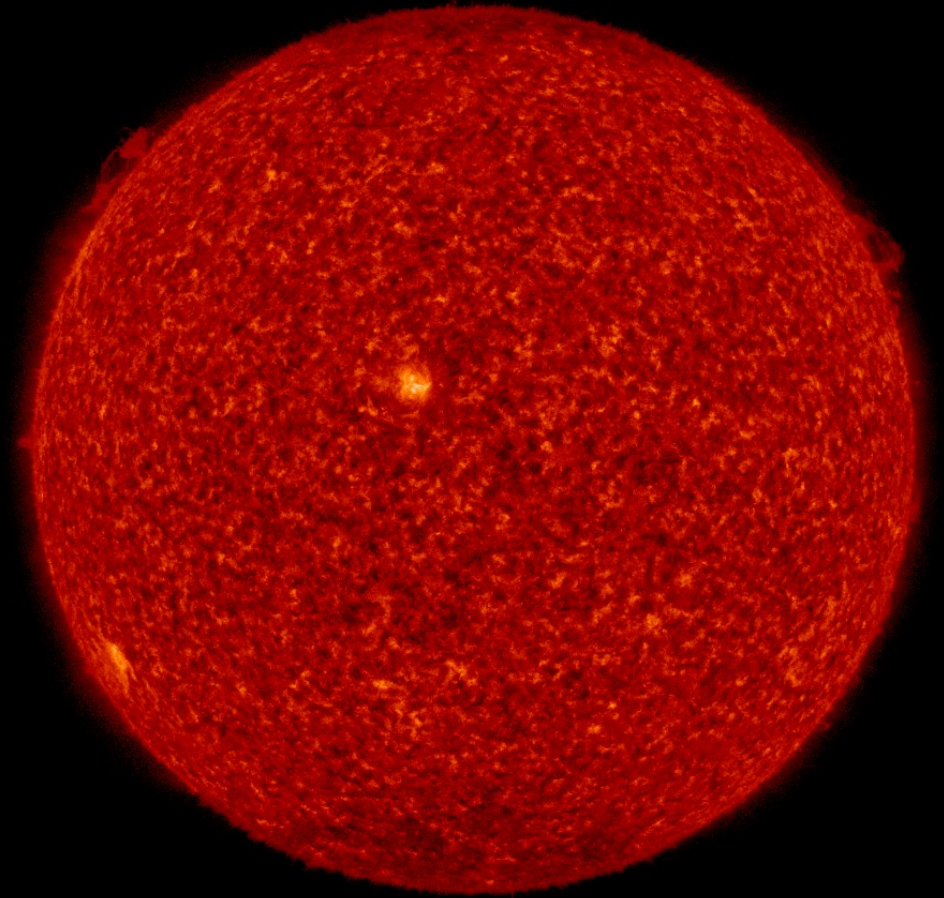
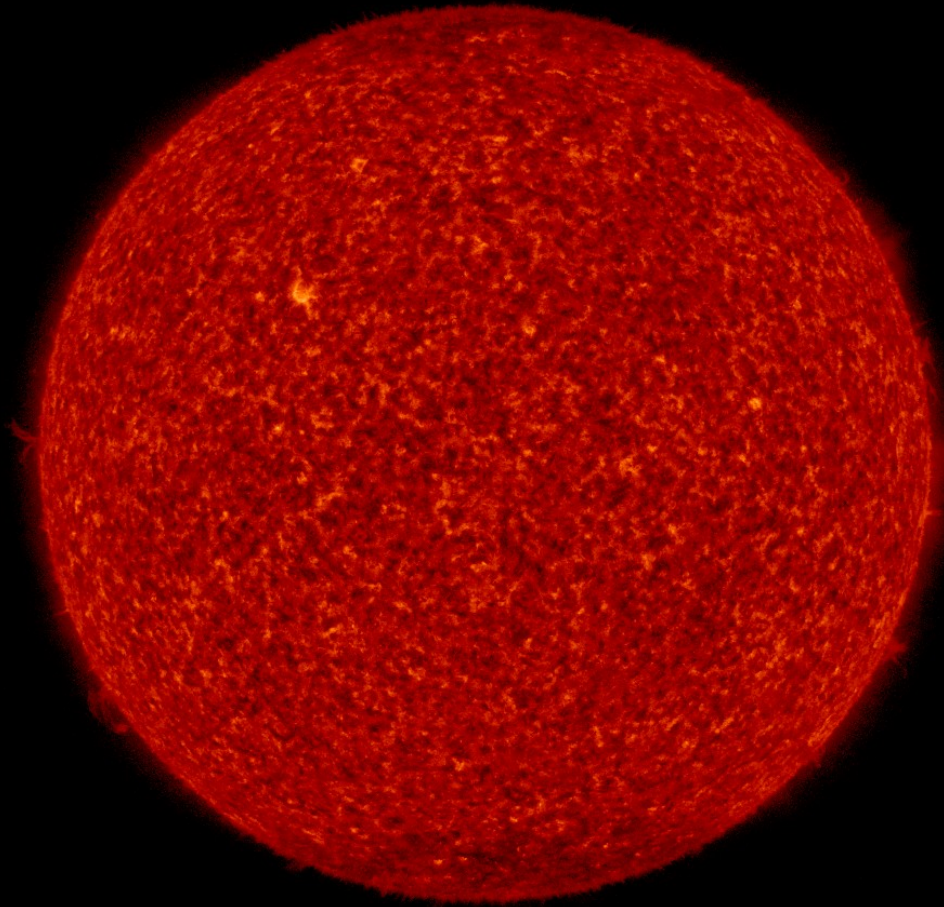
SDO/AIA 193 2020-01-19 23:10:05 UT

SDO/AIA 193 2020-01-26 12:10:41 UT

Solar active region & Filament

SDO/AIA 30.4 nm 2020-01-19

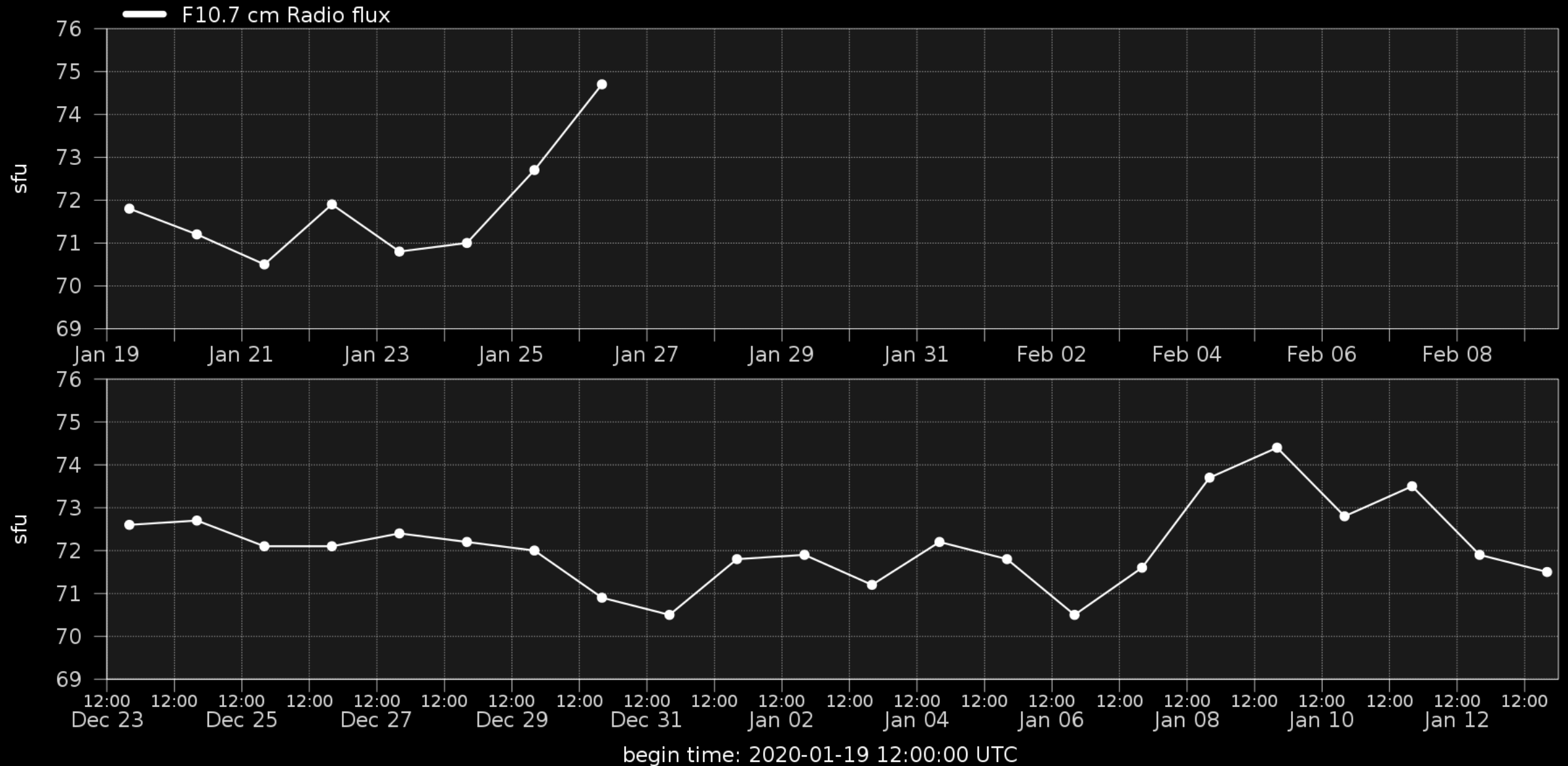
SDO/AIA 30.4 nm 2020-01-26



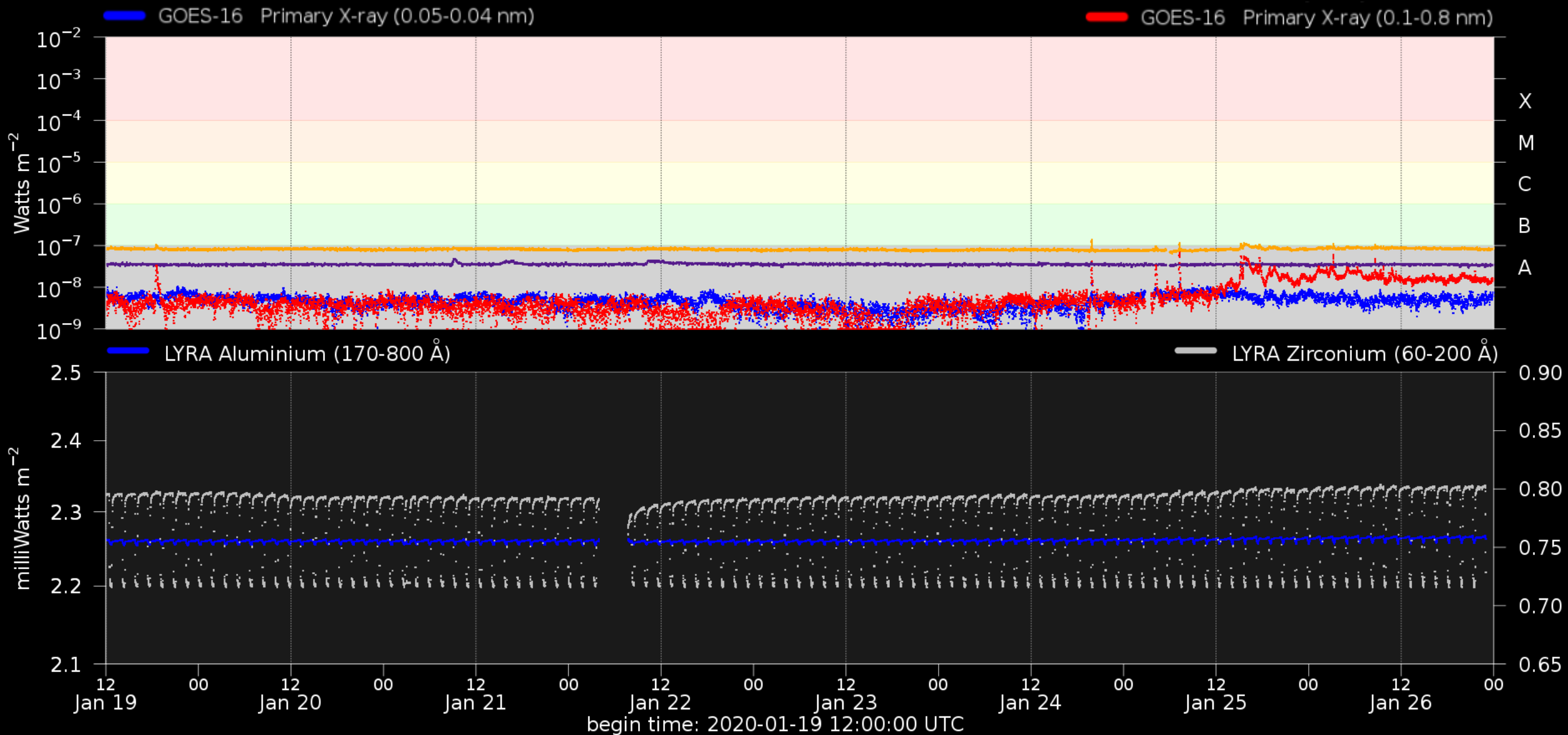
SDO/AIA 304 2020-01-19 22:58:18 UT

SDO/AIA 304 2020-01-26 12:13:30 UT

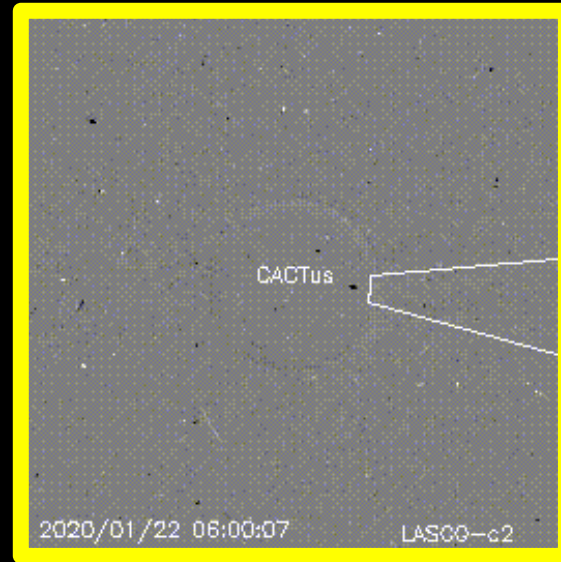
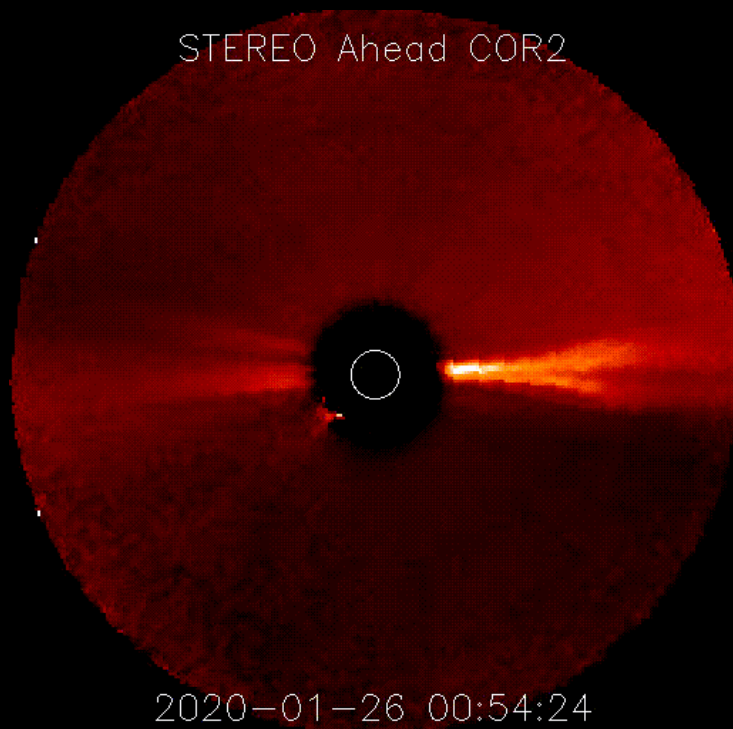
Solar F10.7cm radio flux



Solar X-Ray and UV flux



Coronal Mass Ejection



CME observed of the western limb in STEREO A
– unclear if there may be an Earth directed component

f1

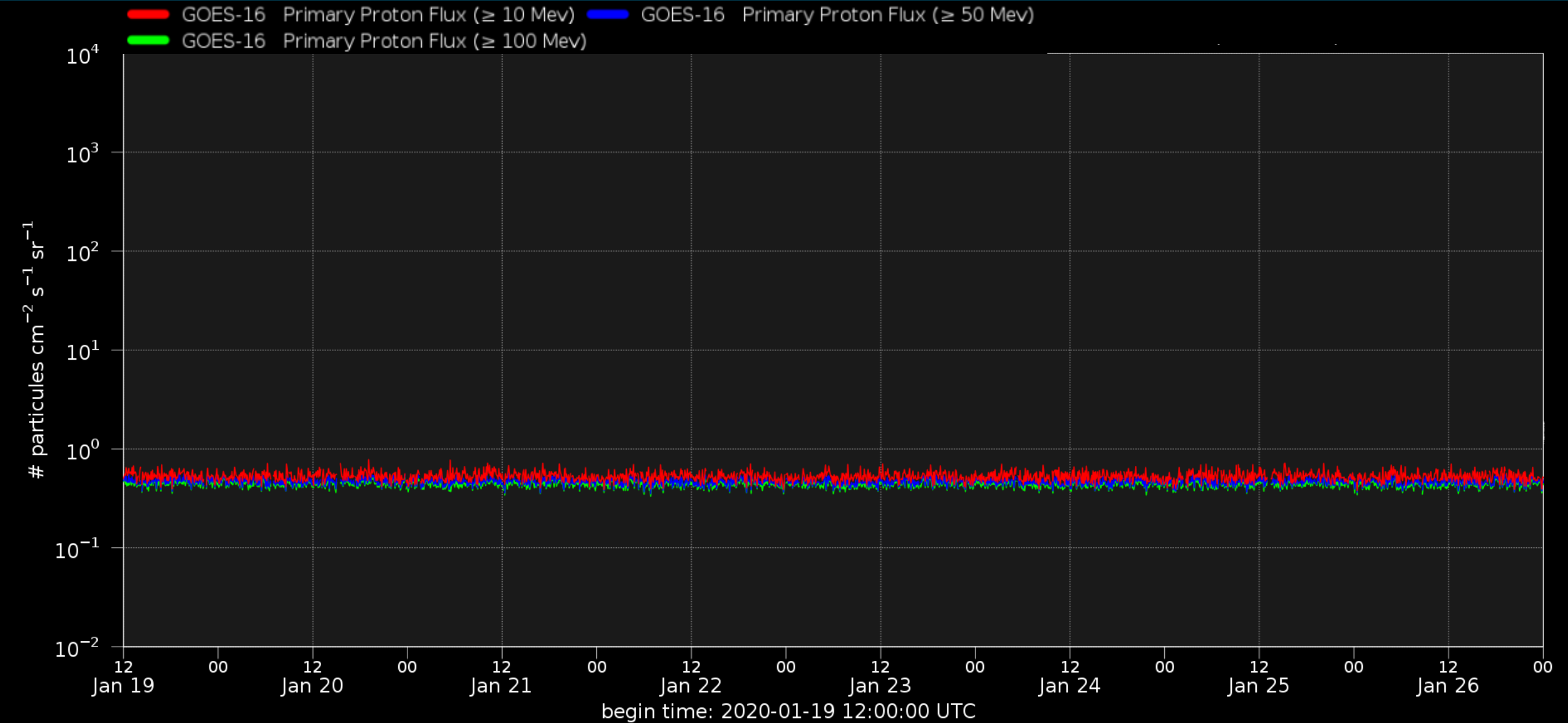
W

N

E

07:00
23:36
05:12
18:48
15:42
19:24
16:48
13:48
10:36
07:42
04:48
01:48
22:00
18:24
15:14
11:54
09:12
06:24
03:24
23:48
20:24
17:00
13:48
10:24
07:12
04:00
00:36
21:24
18:00
15:12
11:42
08:48
06:00
03:24
00:00

Solar proton flux



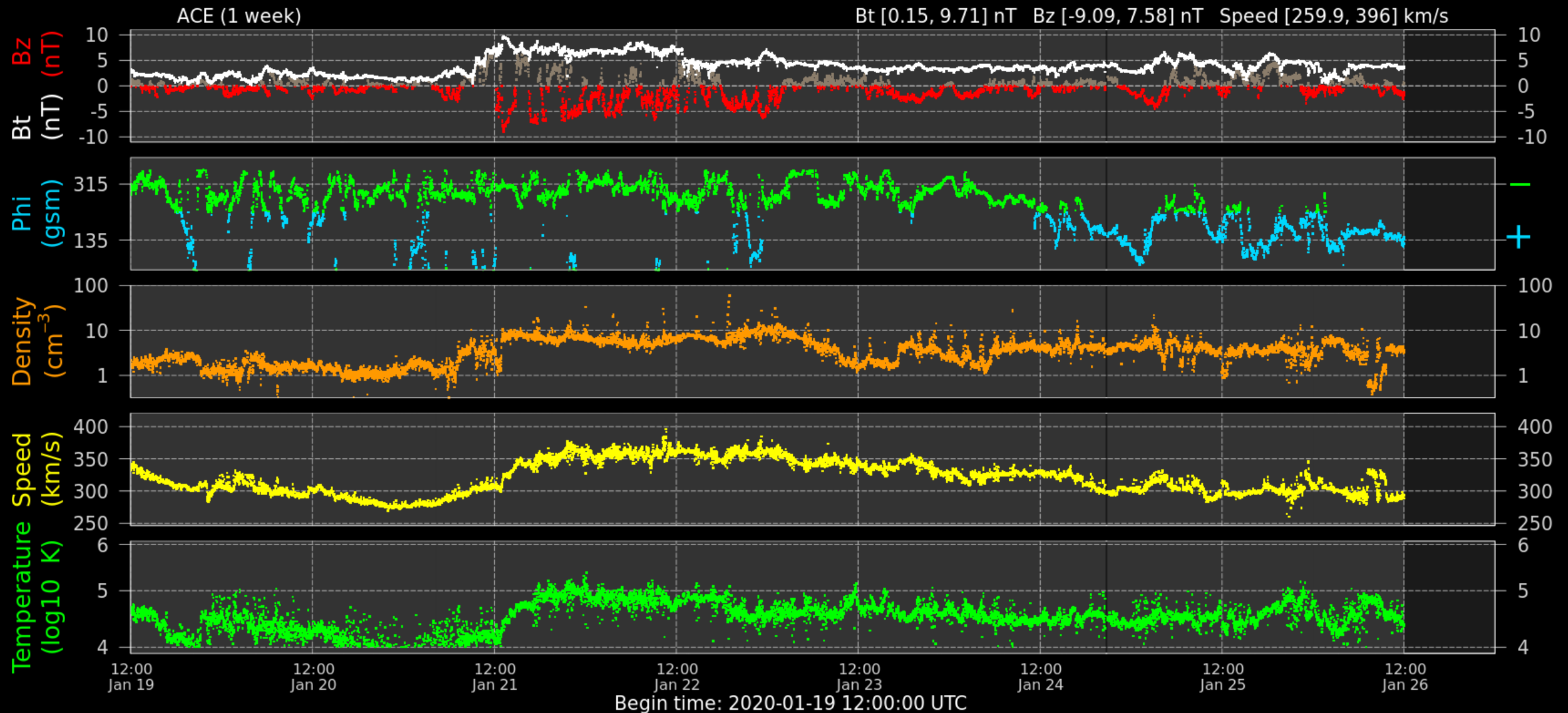
Solar Wind and Geomagnetic Activity



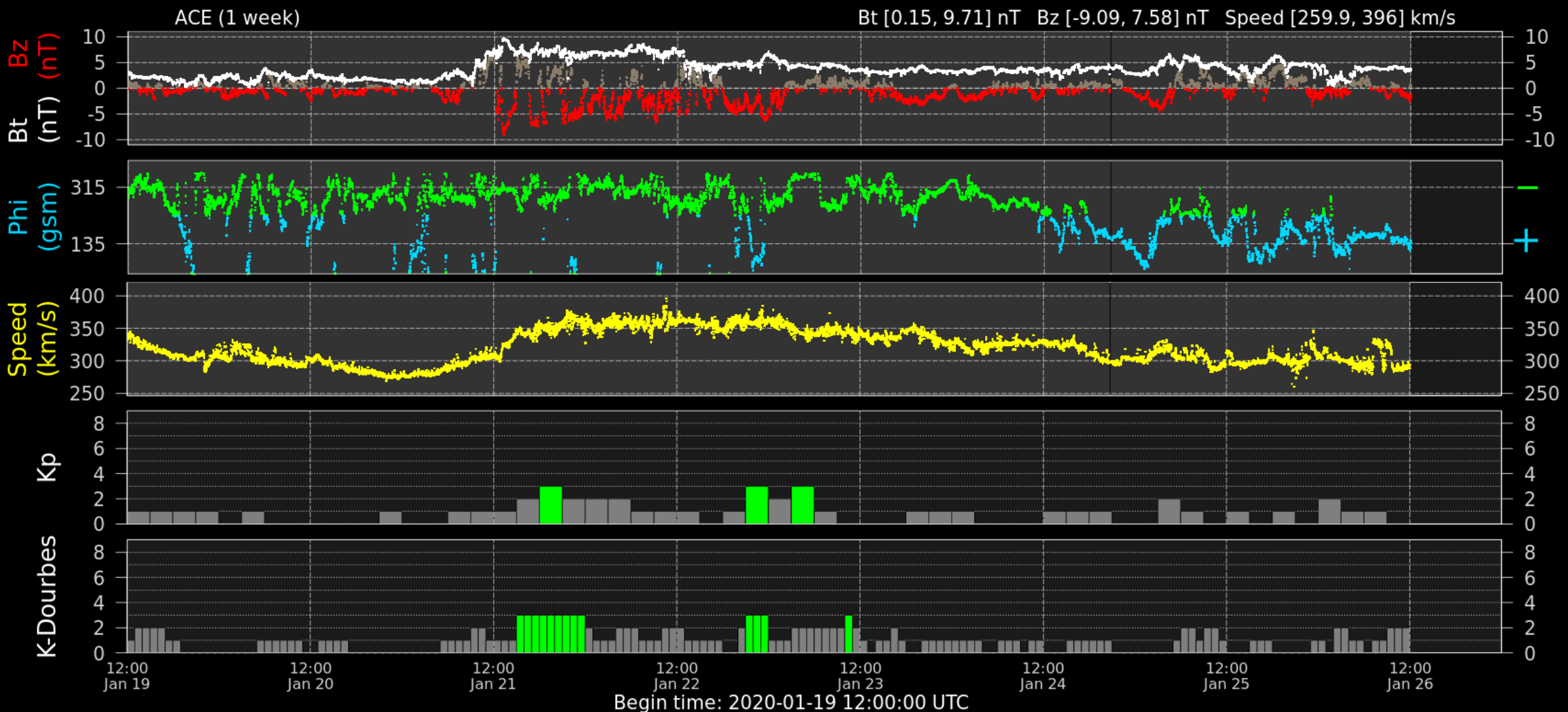
Royal Observatory
of Belgium

Solar Influences
Data analysis Centre
www.sidc.be

Solar wind parameters (ACE data)



Solar wind parameters & K-index (ACE/Dourbes/Kp)



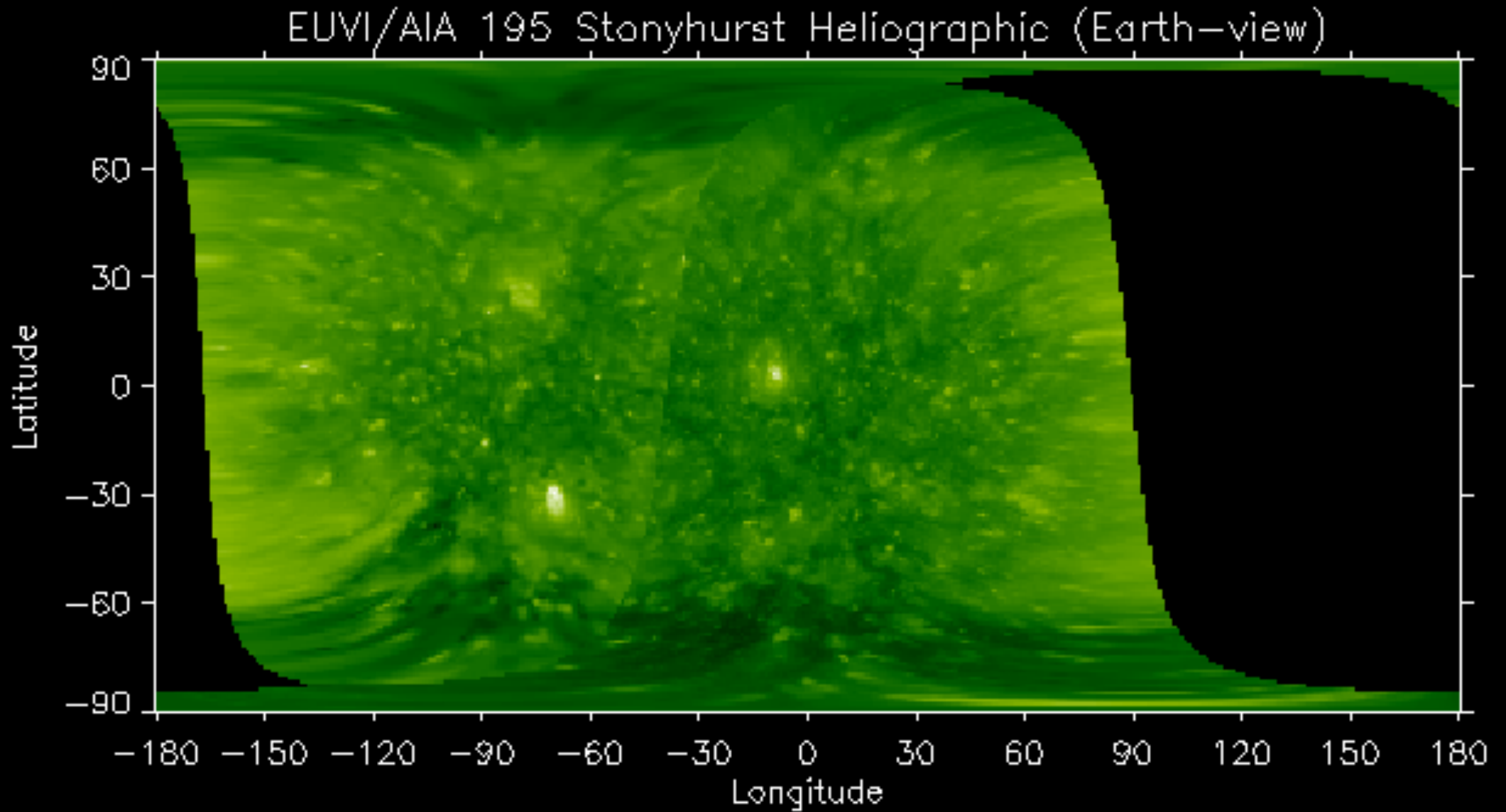
Outlook



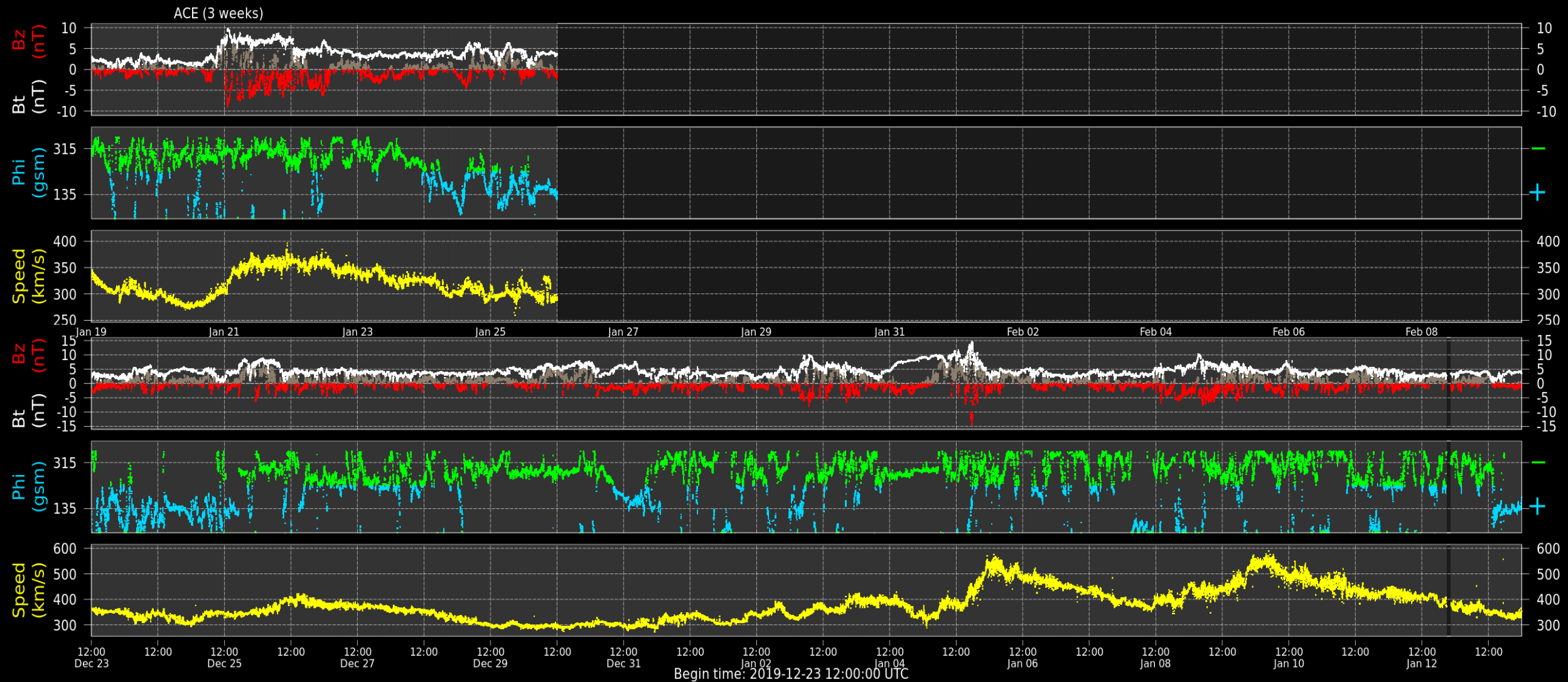
Royal Observatory
of Belgium

Solar Influences
Data analysis Centre
www.sidc.be

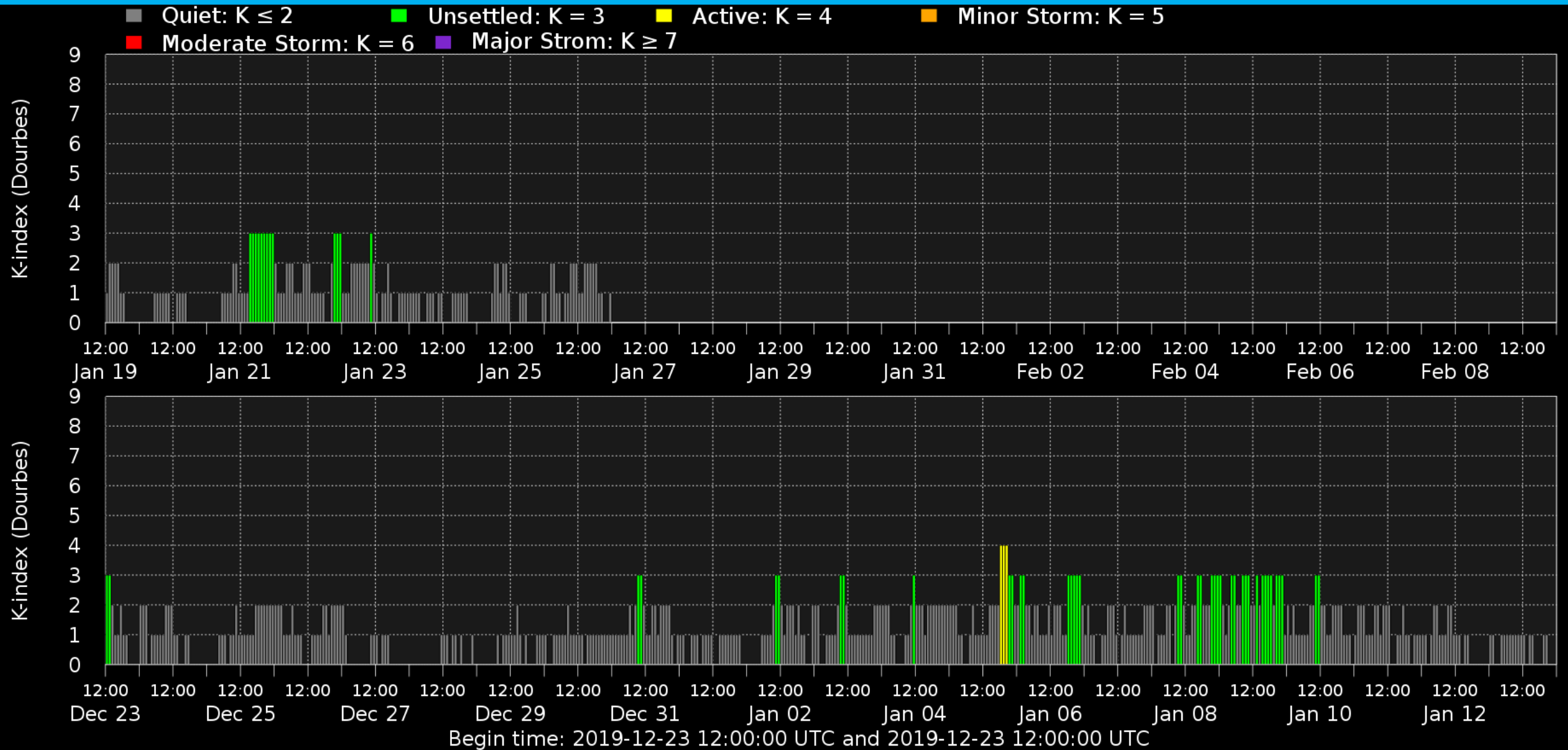
Outlook: Solar activity



Outlook: Solar wind



Outlook: Geomagnetic activity



SIDC Space Weather Briefing

See you at our next briefing!

Or visit us at www.sidc.be



Royal Observatory
of Belgium

Solar Influences
Data analysis Centre
www.sidc.be