

SIDC Space Weather Briefing

09 August 2020 - 16 August 2020

Judith De Patoul and Konstantina Loumou
& the SIDC forecaster team



Royal Observatory
of Belgium

Solar Influences
Data analysis Centre
www.sidc.be

Summary Report

Solar activity from 2020-08-09 12:00 UT to 2020-08-16 12:00 UT

| | |
|----------------|---|
| Active regions | NOAA AR-2768, AR-2769, AR-2770 and AR-2771 |
| Flaring | # B-class flares: 13 # C-class flare: 1 # M-class flare: 0 # X-class flare: 0 |
| Filaments | No Filament eruption |
| CMEs | One CME (not Earth-directed) |
| Proton Events | Background levels |

Solar wind and geomagnetic conditions from 2020-08-09 12:00 UT to 2020-08-16 12:00 UT

| | |
|---------------|---|
| Coronal Holes | No CH with geo-effective impact |
| ICME | No ICME |
| SW Conditions | Nominal levels |
| K-indices | max K-index (Dourbes): 3 max Kp-index (NOAA): 2 |

All Quiet Alert: On

Solar Activity

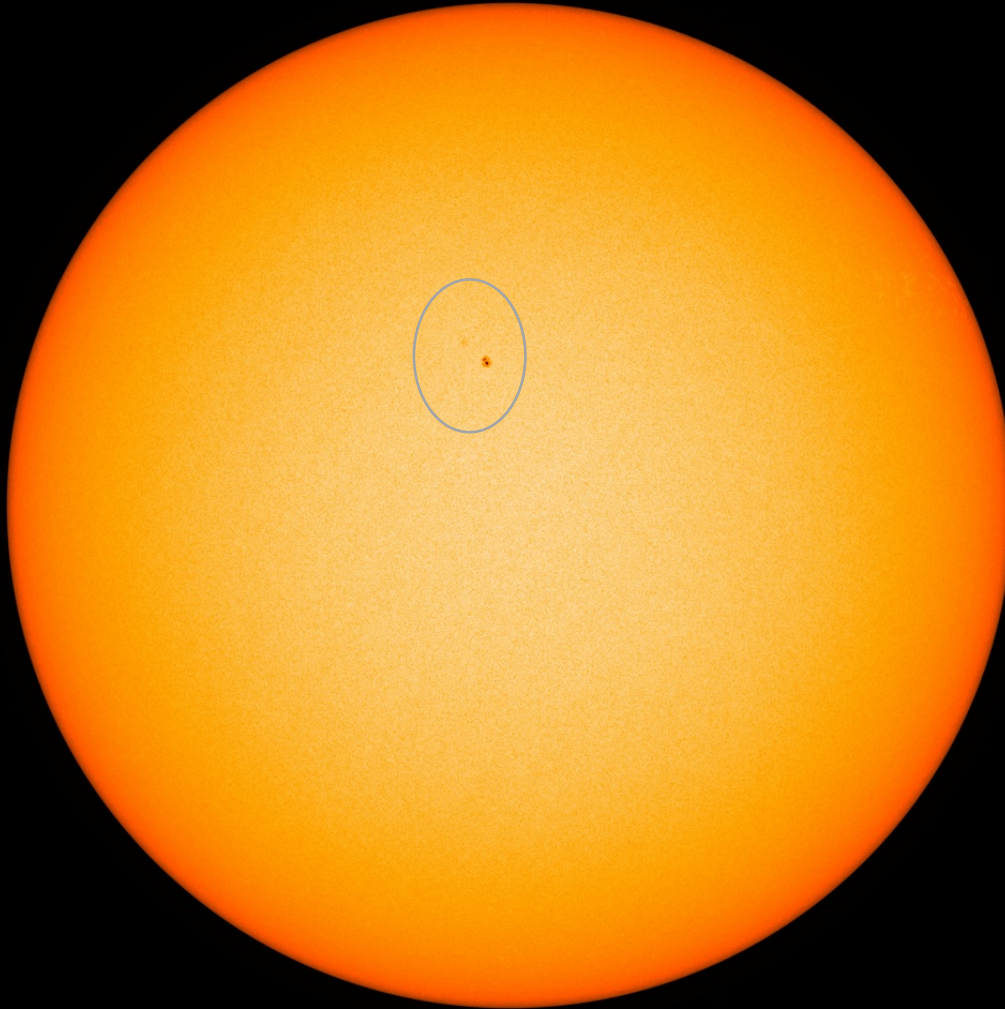


Royal Observatory
of Belgium

Solar Influences
Data analysis Centre
www.sidc.be

Solar active region - start of the week

SDO/HMI White Light 2020-08-09



SDO/HMI Quick-Look Continuum: 20200809_114500

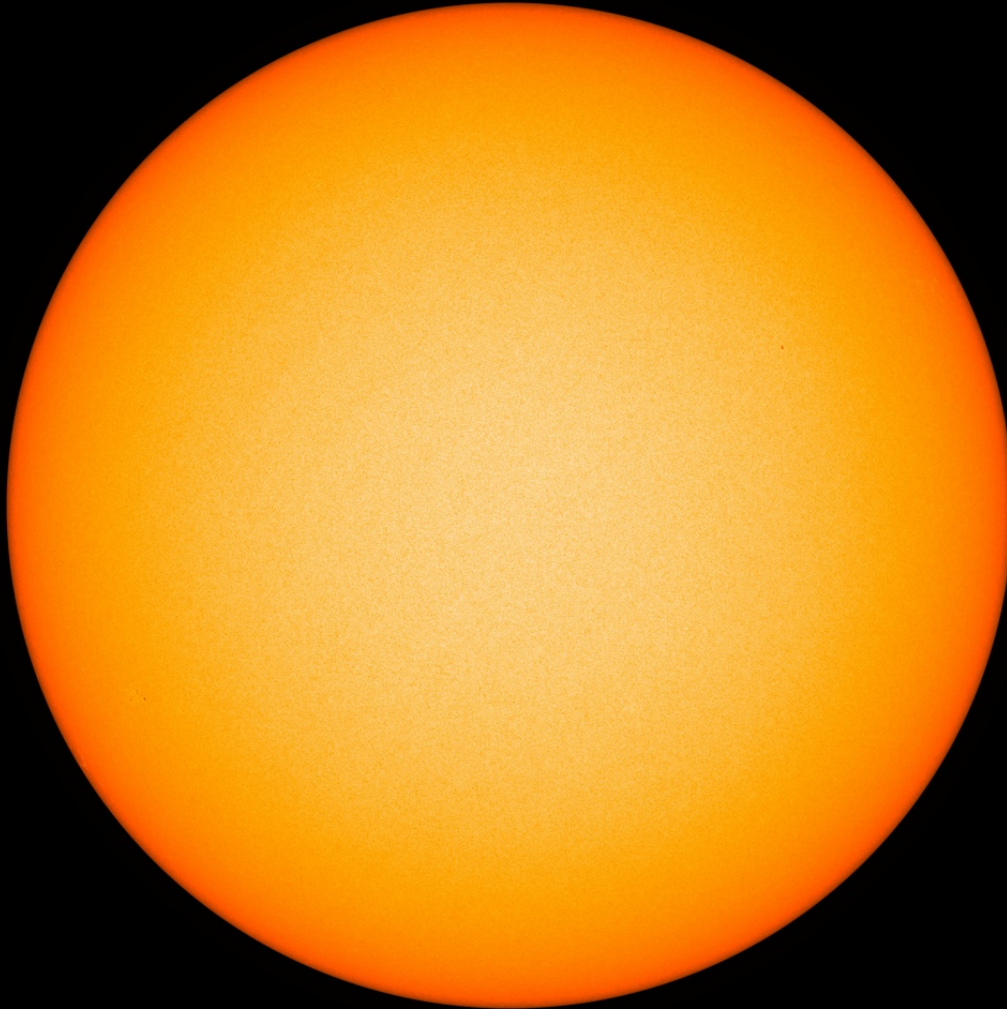
SDO/HMI Magnetogram 2020-08-09



SDO/HMI Quick-Look Magnetogram: 20200809_114500

Solar active region - middle of the week

SDO/HMI White Light 2020-08-12



SDO/HMI Quick-Look Continuum: 20200812_114500

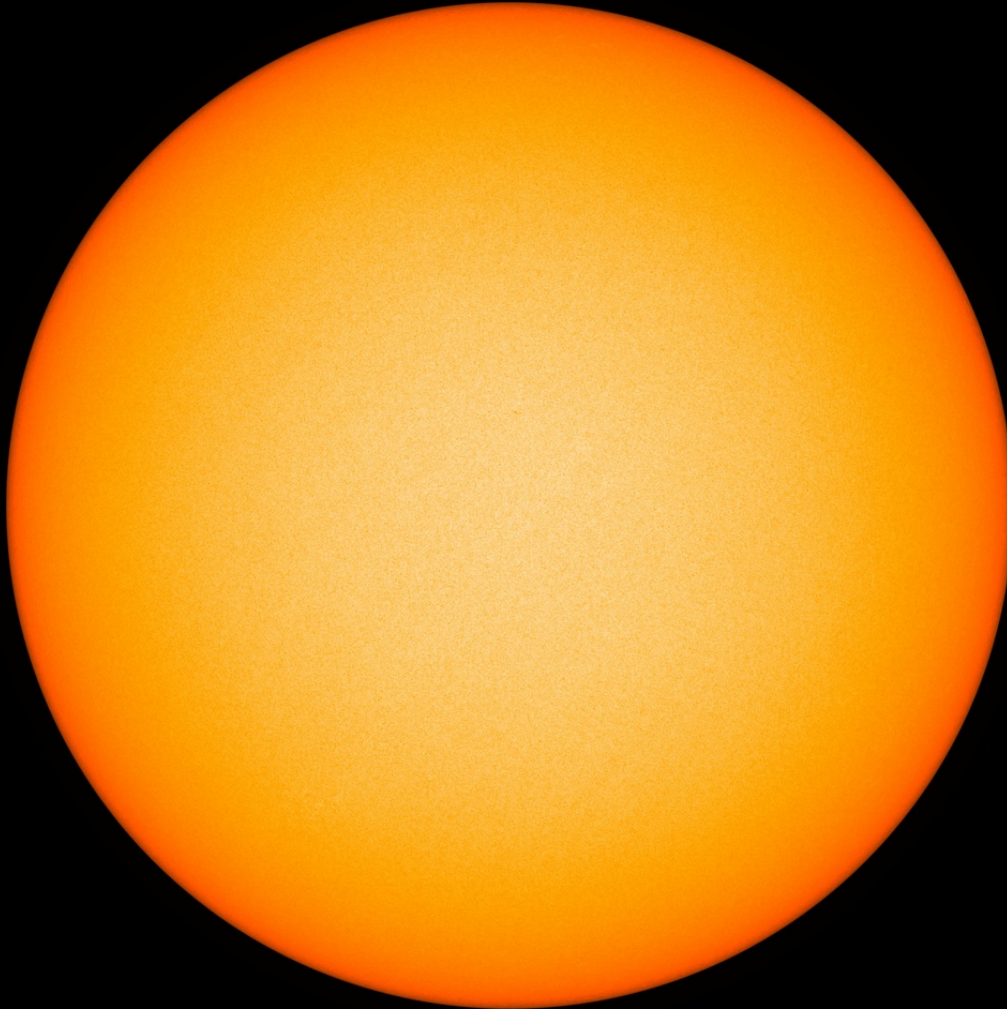
SDO/HMI Magnetogram 2020-08-12



SDO/HMI Quick-Look Magnetogram: 20200812_114500

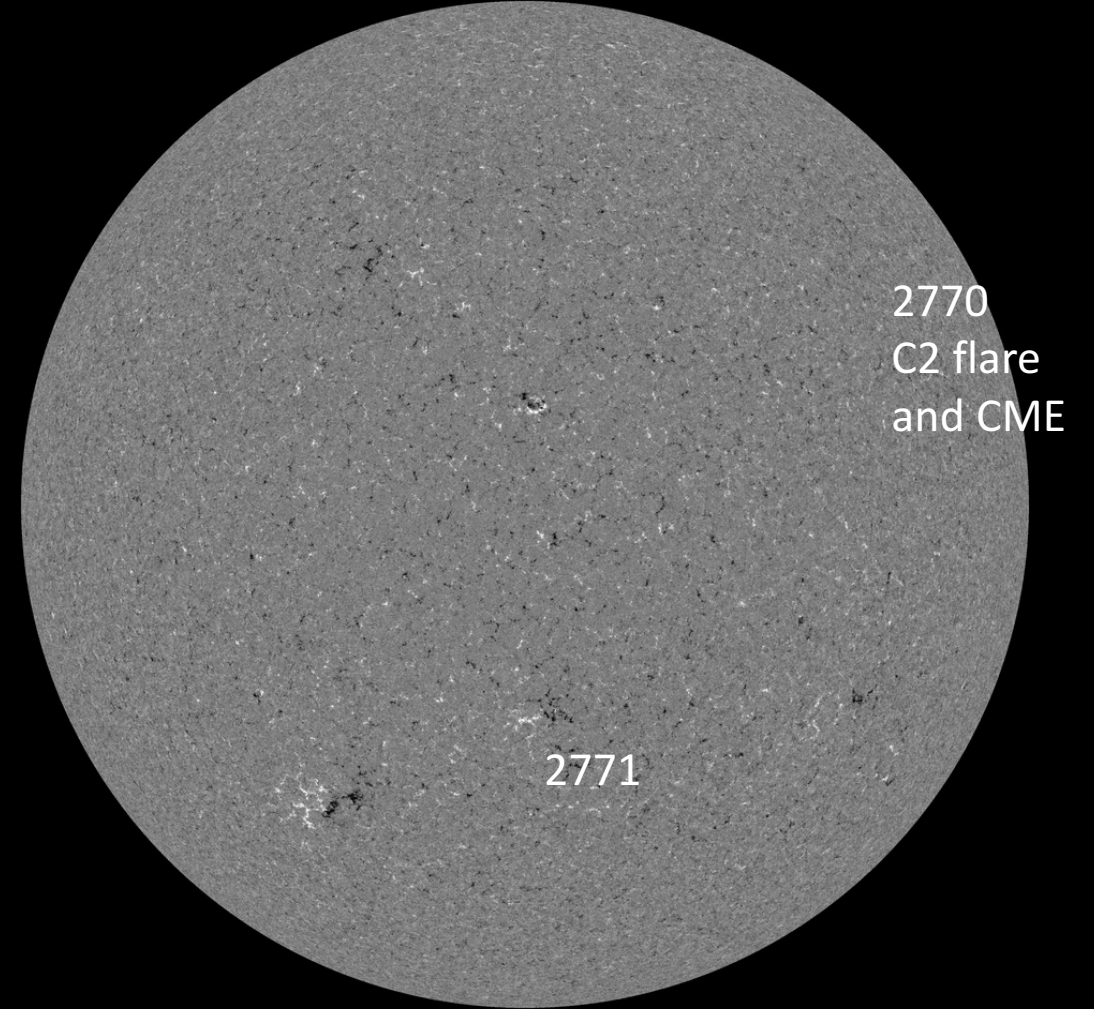
Solar active region - end of the week

SDO/HMI White Light 2020-08-16



SDO/HMI Quick-Look Continuum: 20200816_114500

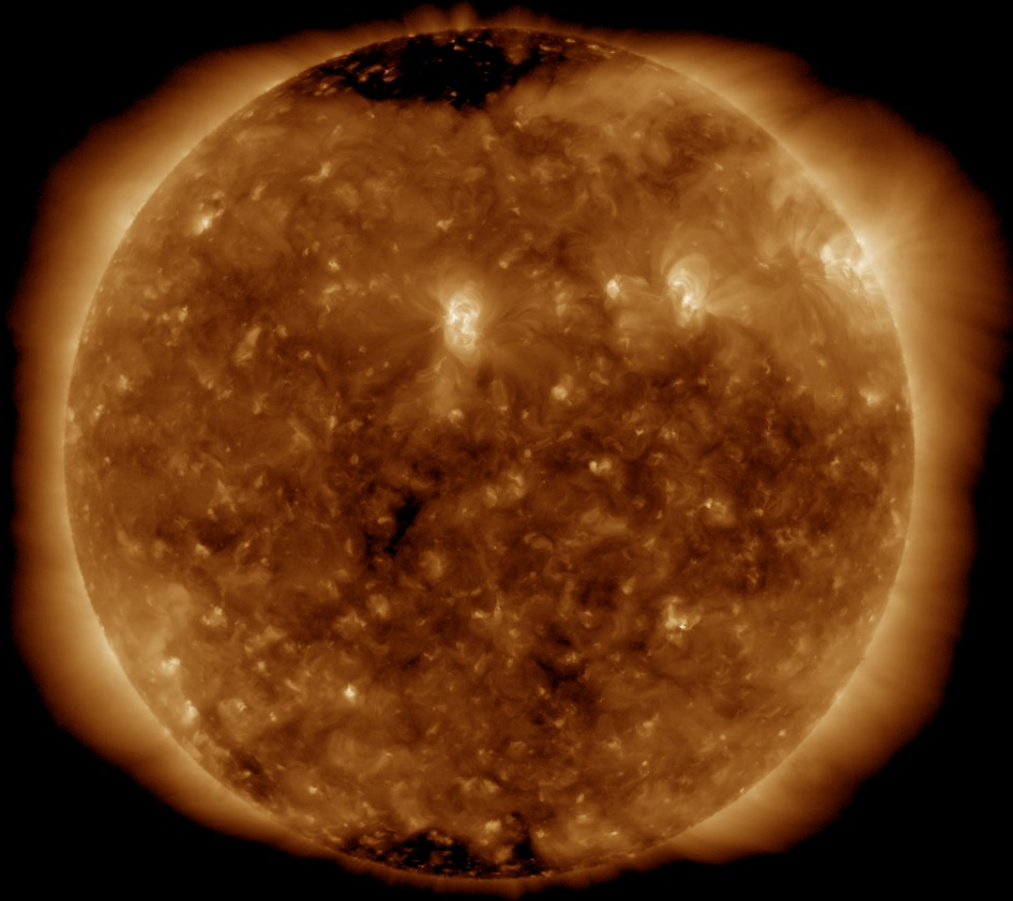
SDO/HMI Magnetogram 2020-08-16



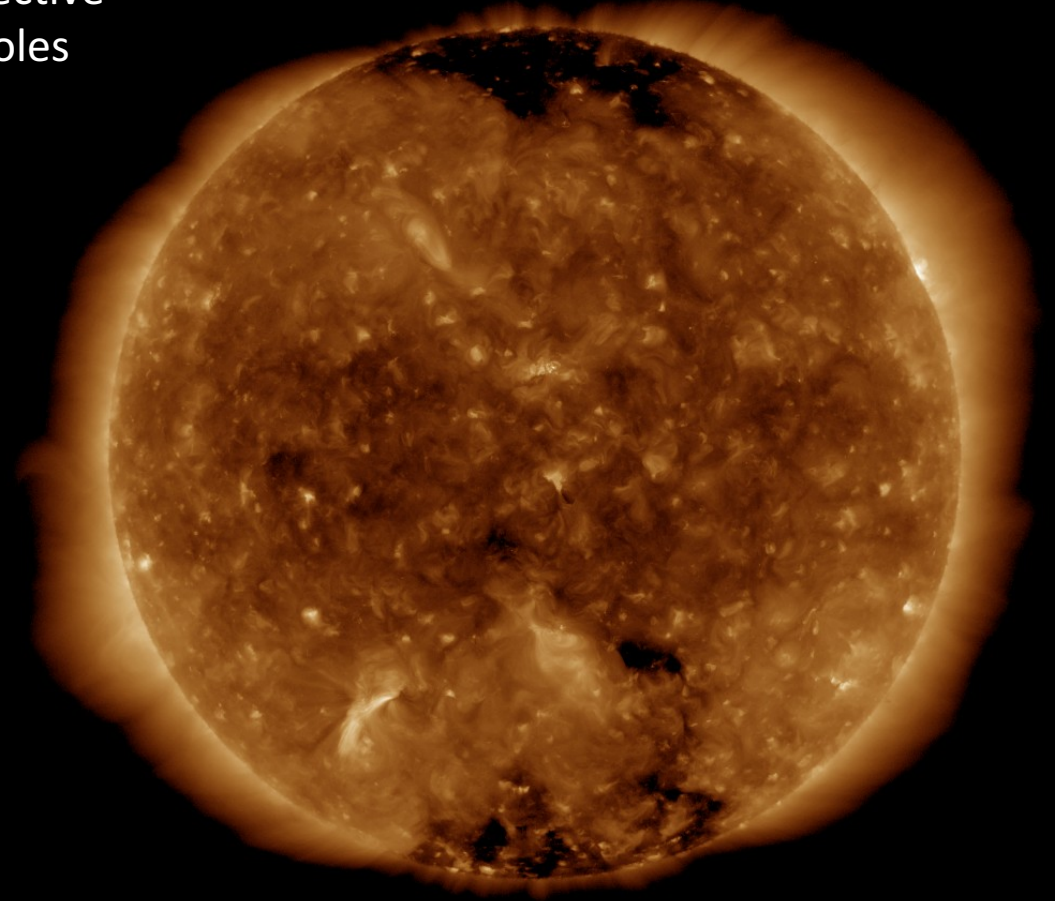
SDO/HMI Quick-Look Magnetogram: 20200816_114500

Solar active region & Coronal hole

SDO/AIA 19.3 nm 2020-08-09



SDO/AIA 19.3 nm 2020-08-16

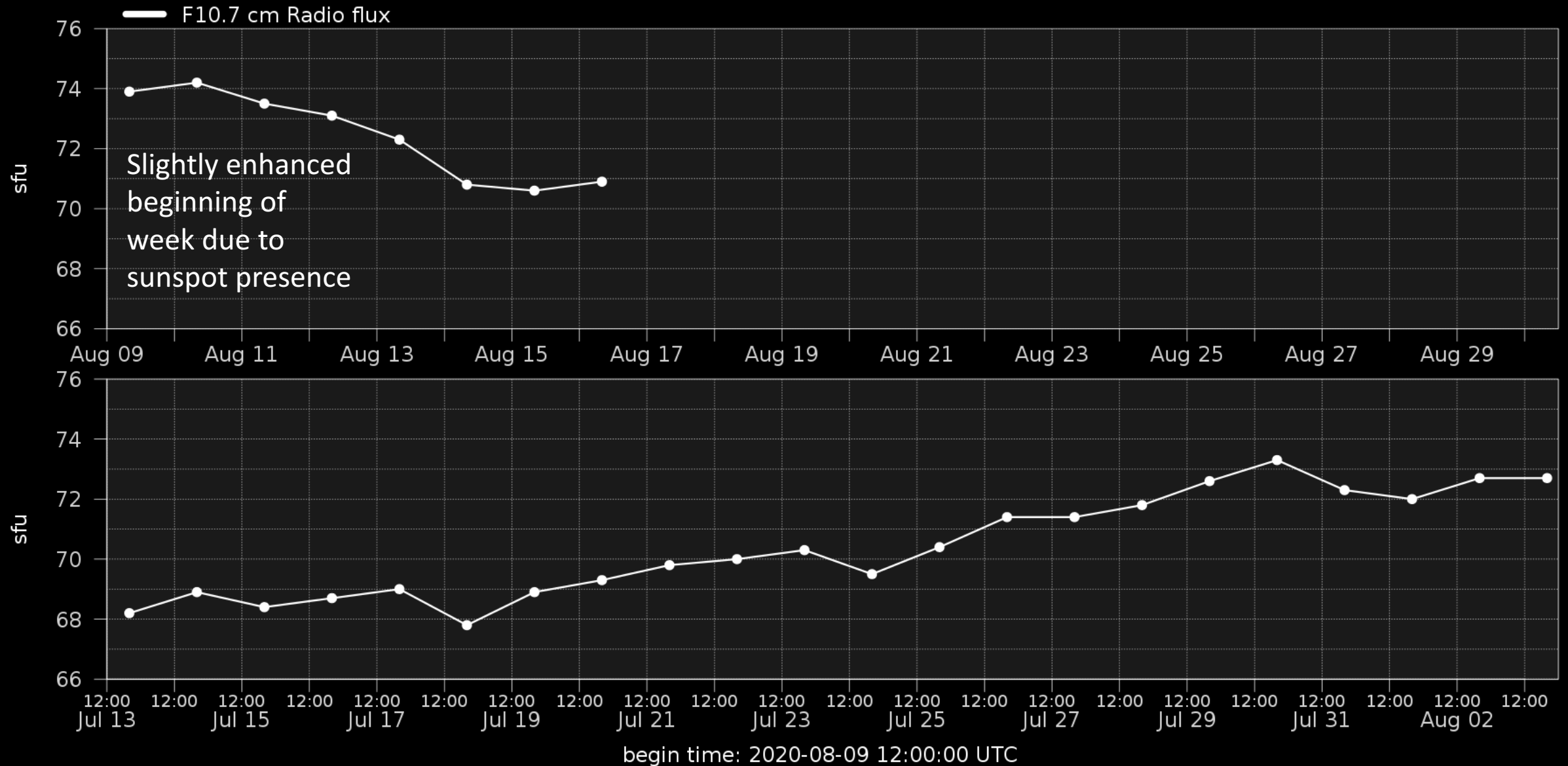


No geoeffective
Coronal Holes

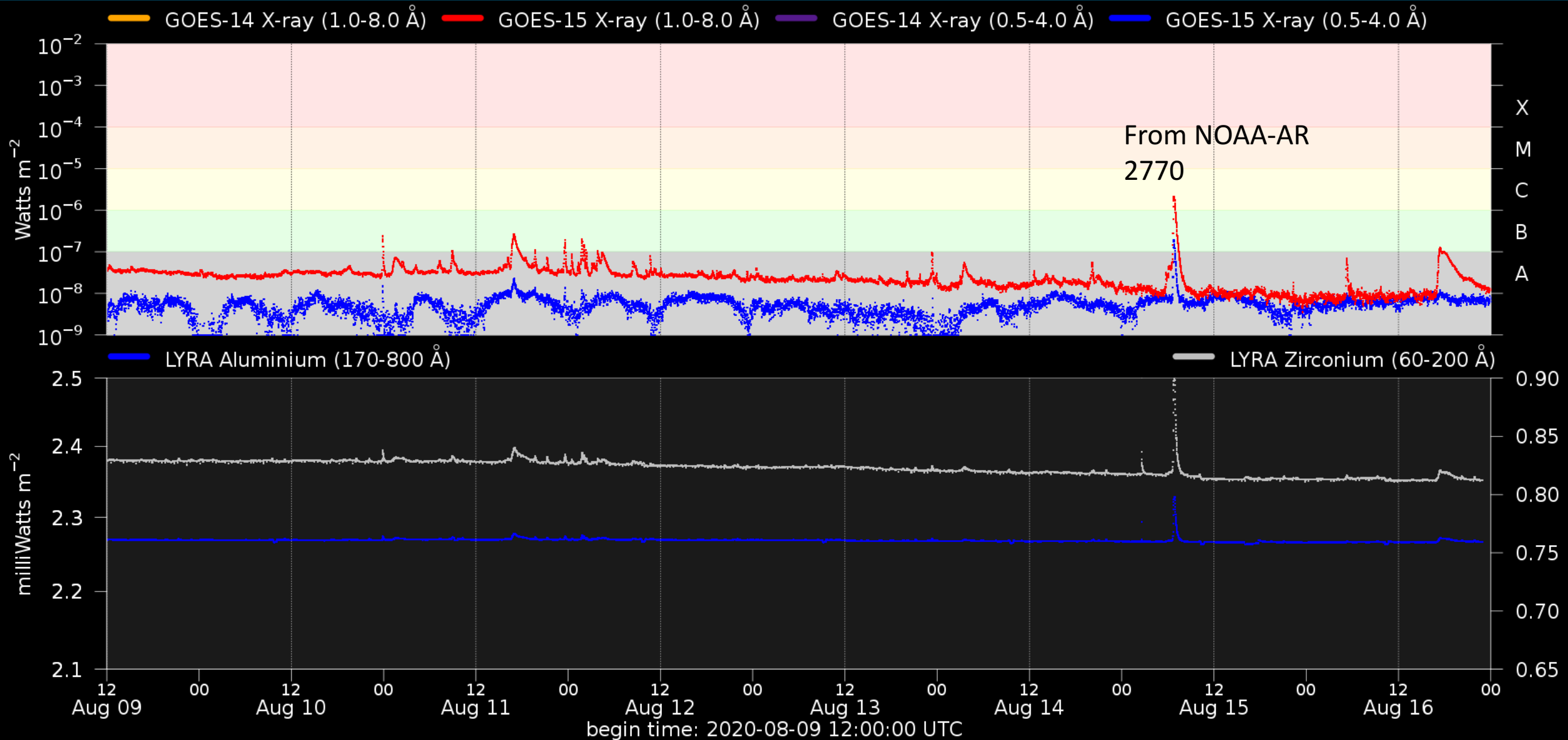
SDO/AIA 193 2020-08-09 12:17:29 UT

SDO/AIA 193 2020-08-16 12:17:29 UT

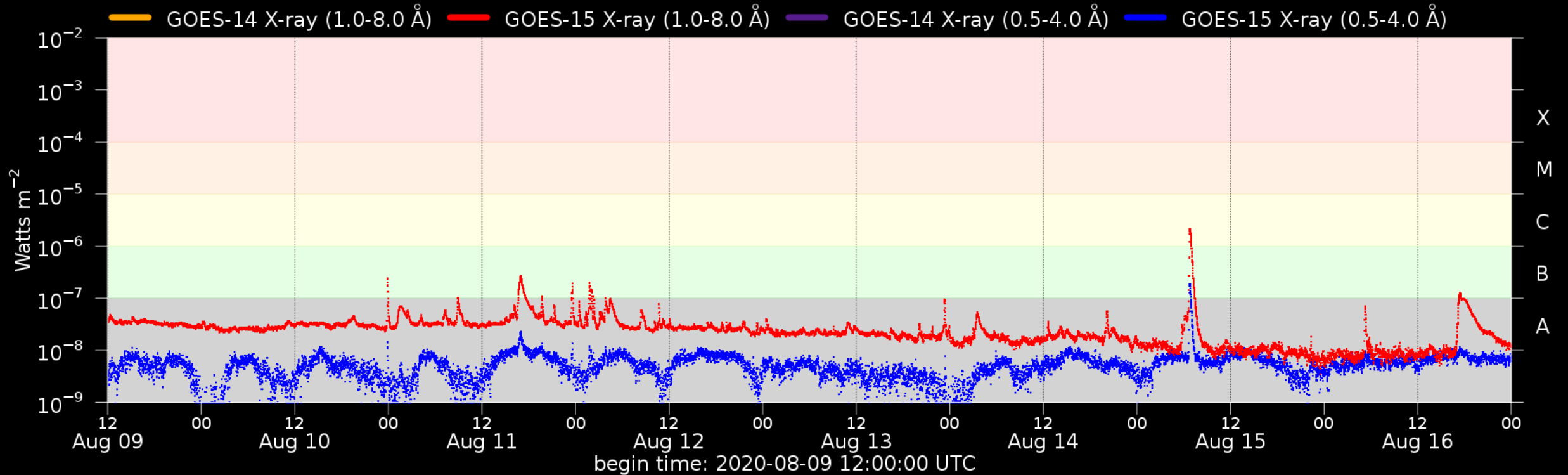
Solar F10.7cm radio flux



Solar X-Ray and UV flux



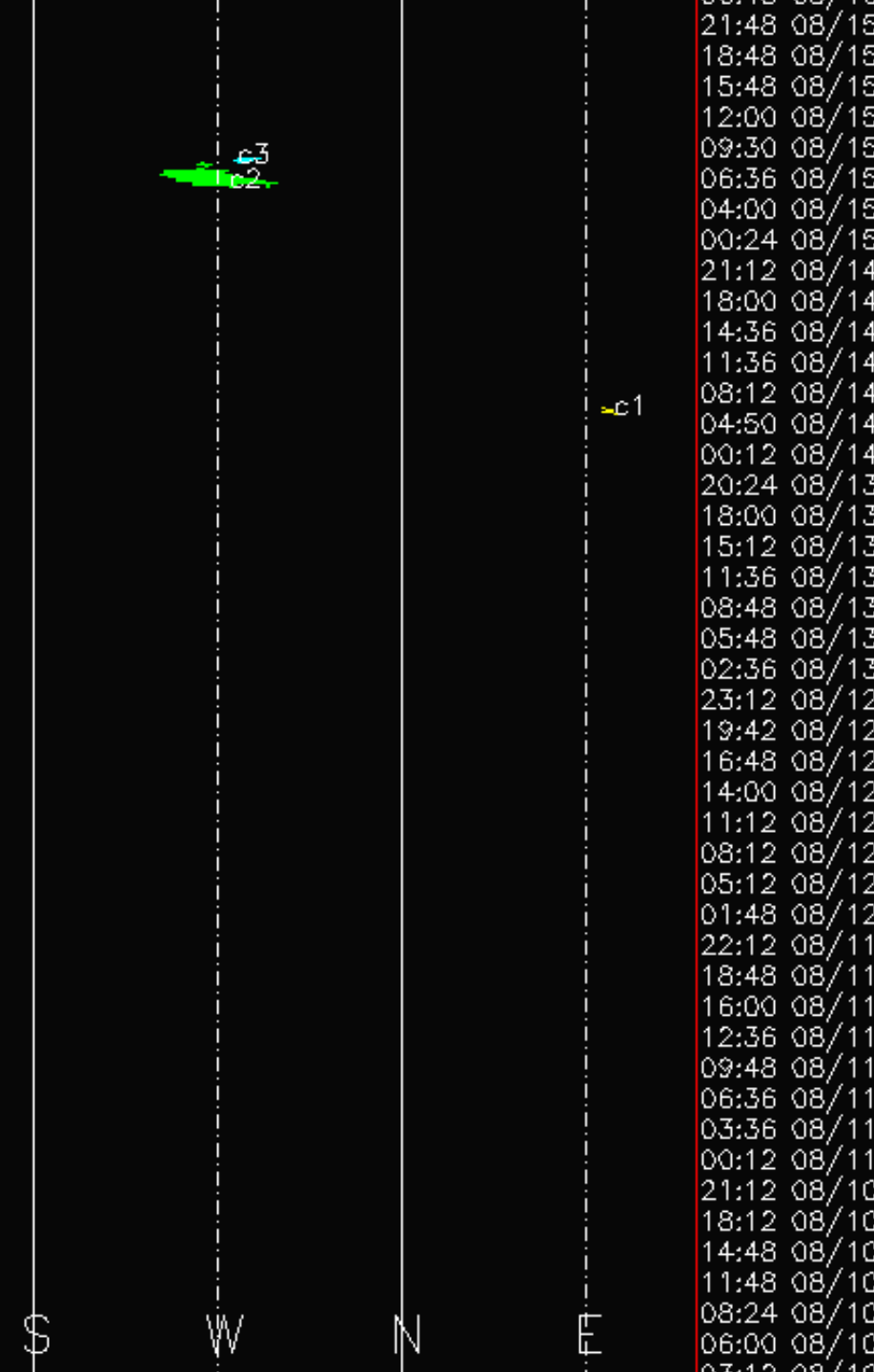
Flaring activity



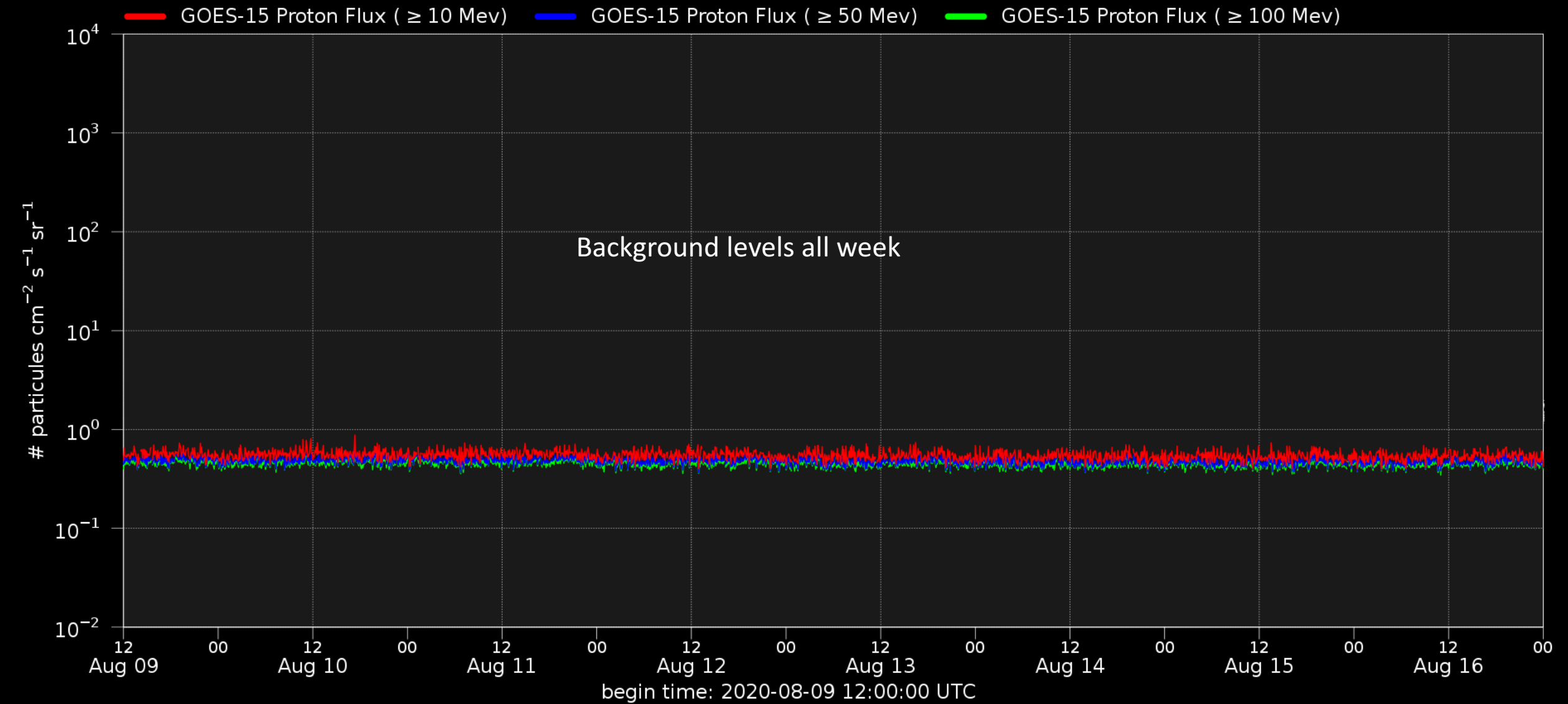
Probabilities (%) and occurrences (#) of B/C/M/X-flares issued at 12:30 and over the next 24h:

| Issue date | 2020-08-09 | 2020-08-10 | 2020-08-11 | 2020-08-12 | 2020-08-13 | 2020-08-14 | 2020-08-15 | 2020-08-16 |
|-------------|--------------|--------------|--------------|--------------|--------------|--------------|--------------|--------------|
| Probability | --- 05 01 01 | --- 10 01 01 | --- 05 01 01 | --- 05 01 01 | --- 10 01 01 | --- 05 01 01 | --- 05 01 01 | --- 01 01 01 |
| Observed | 00 00 00 00 | 03 00 00 00 | 07 00 00 00 | 00 00 00 00 | 00 00 00 00 | 01 01 00 00 | 00 00 00 00 | 02 00 00 00 |

Coronal Mass Ejection



Solar proton flux



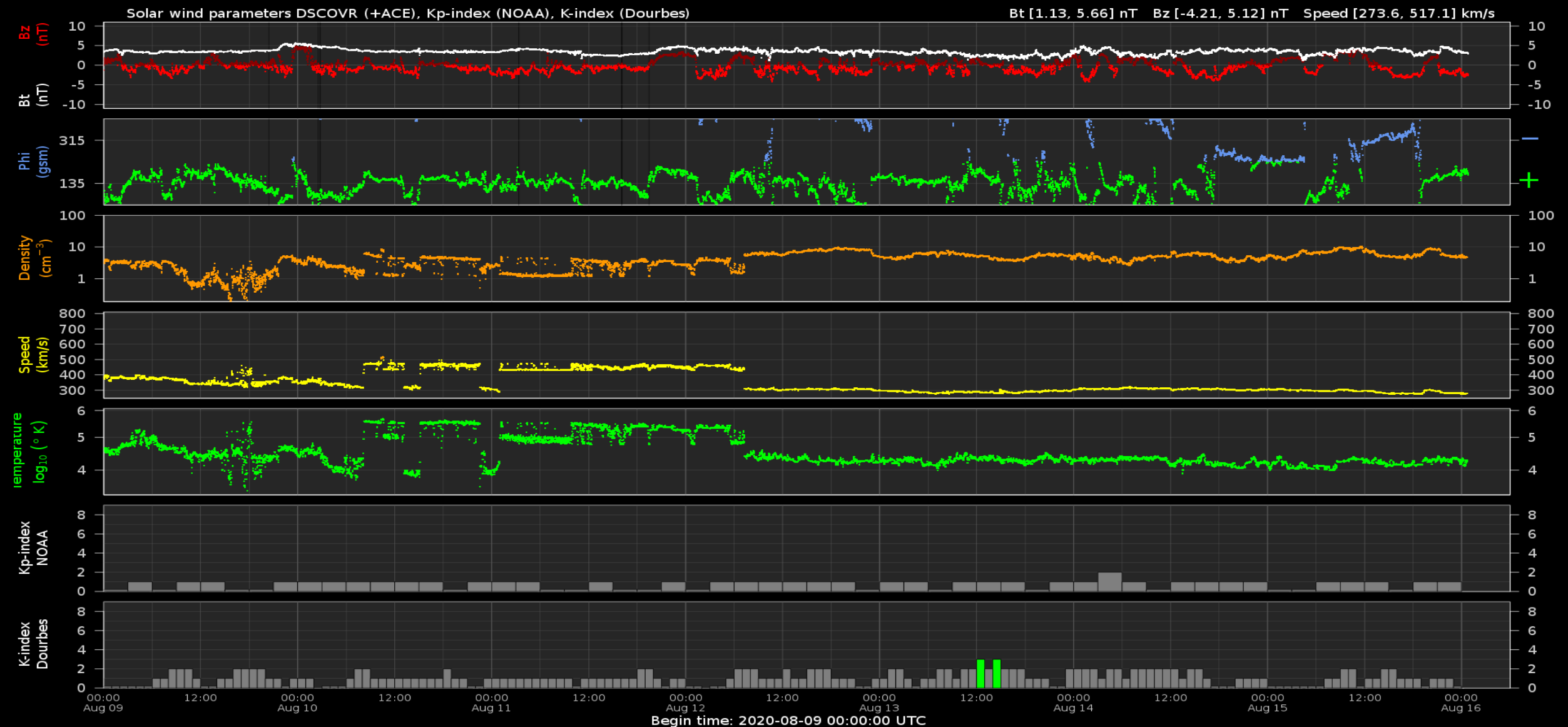
Solar Wind and Geomagnetic Activity



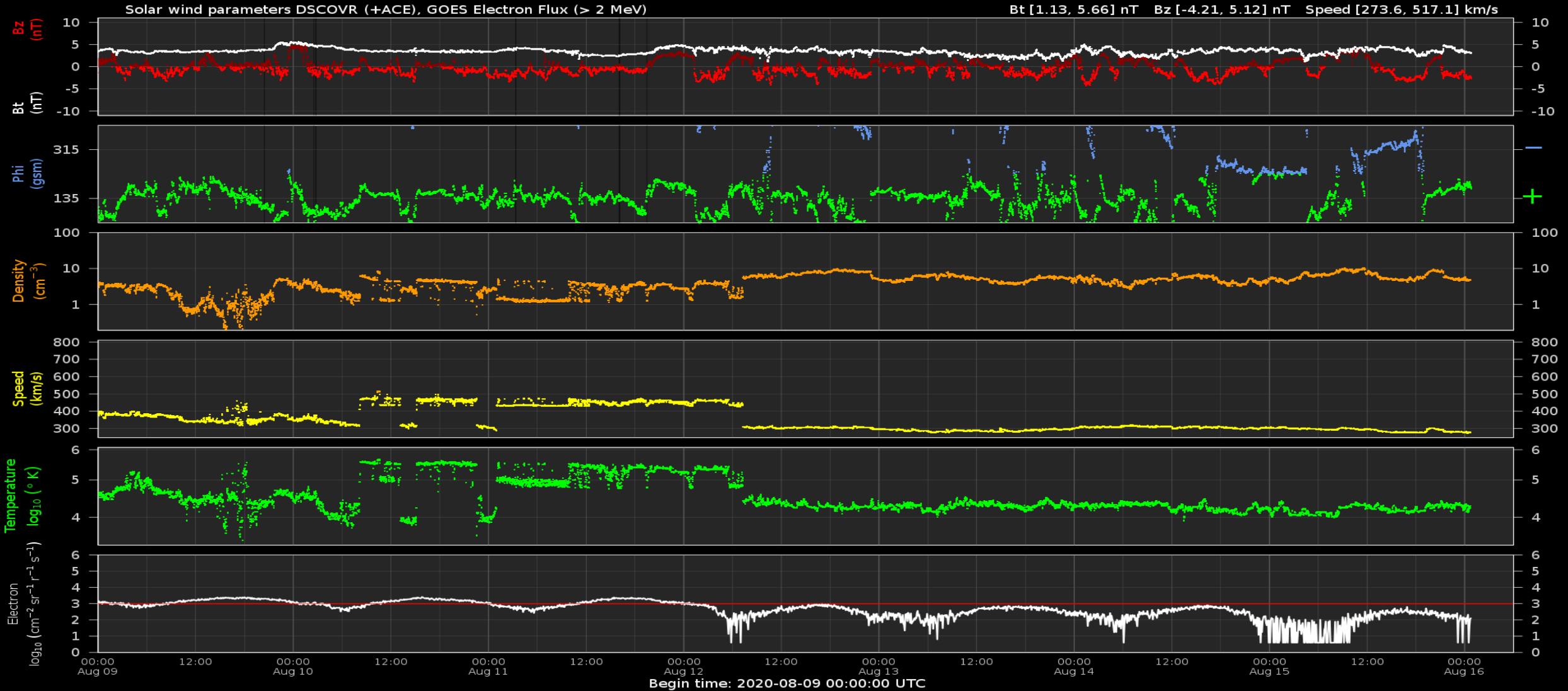
Royal Observatory
of Belgium

Solar Influences
Data analysis Centre
www.sidc.be

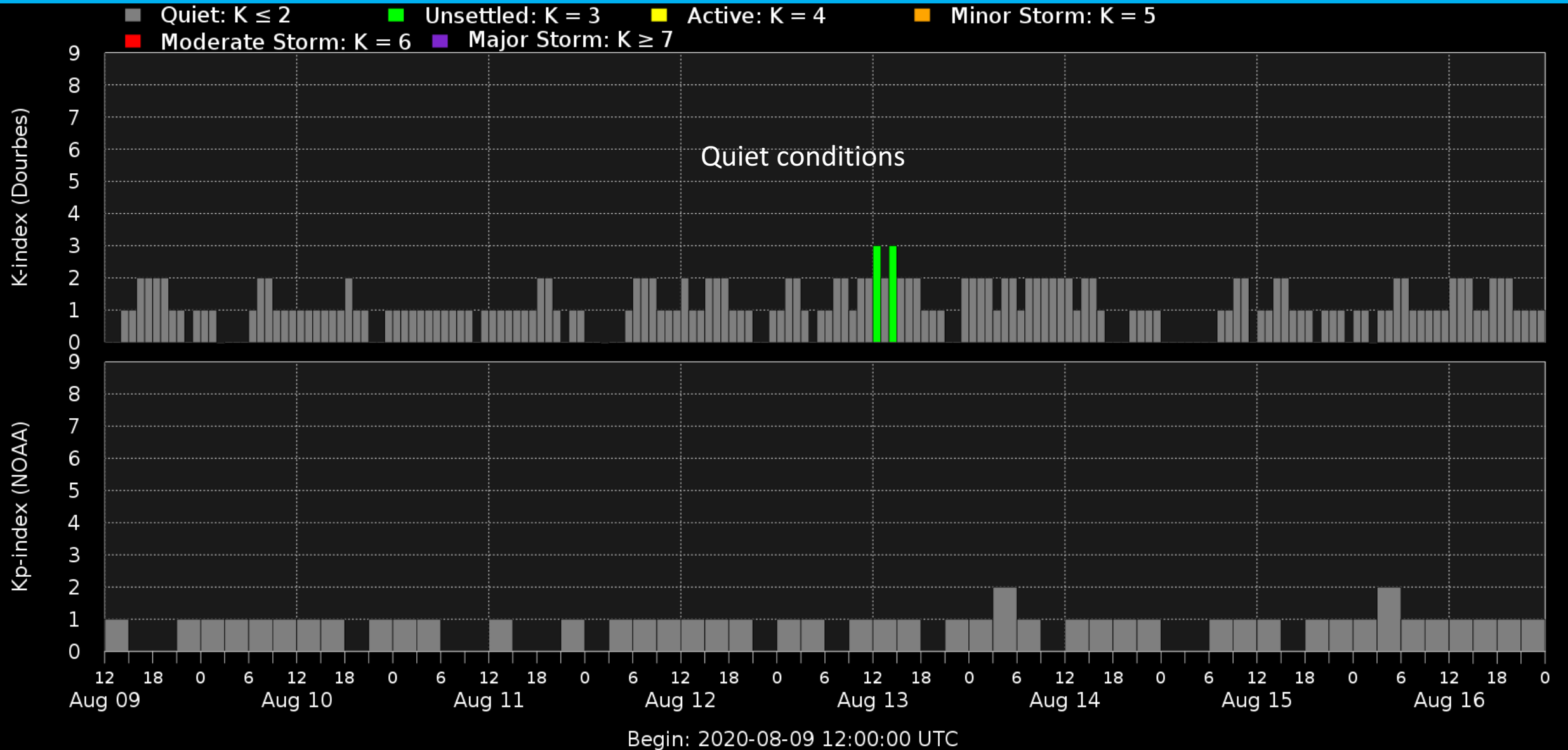
Solar wind parameters (DSCOVR data)



Solar Wind Parameters and electron flux



Geomagnetic activity (K-indexes)



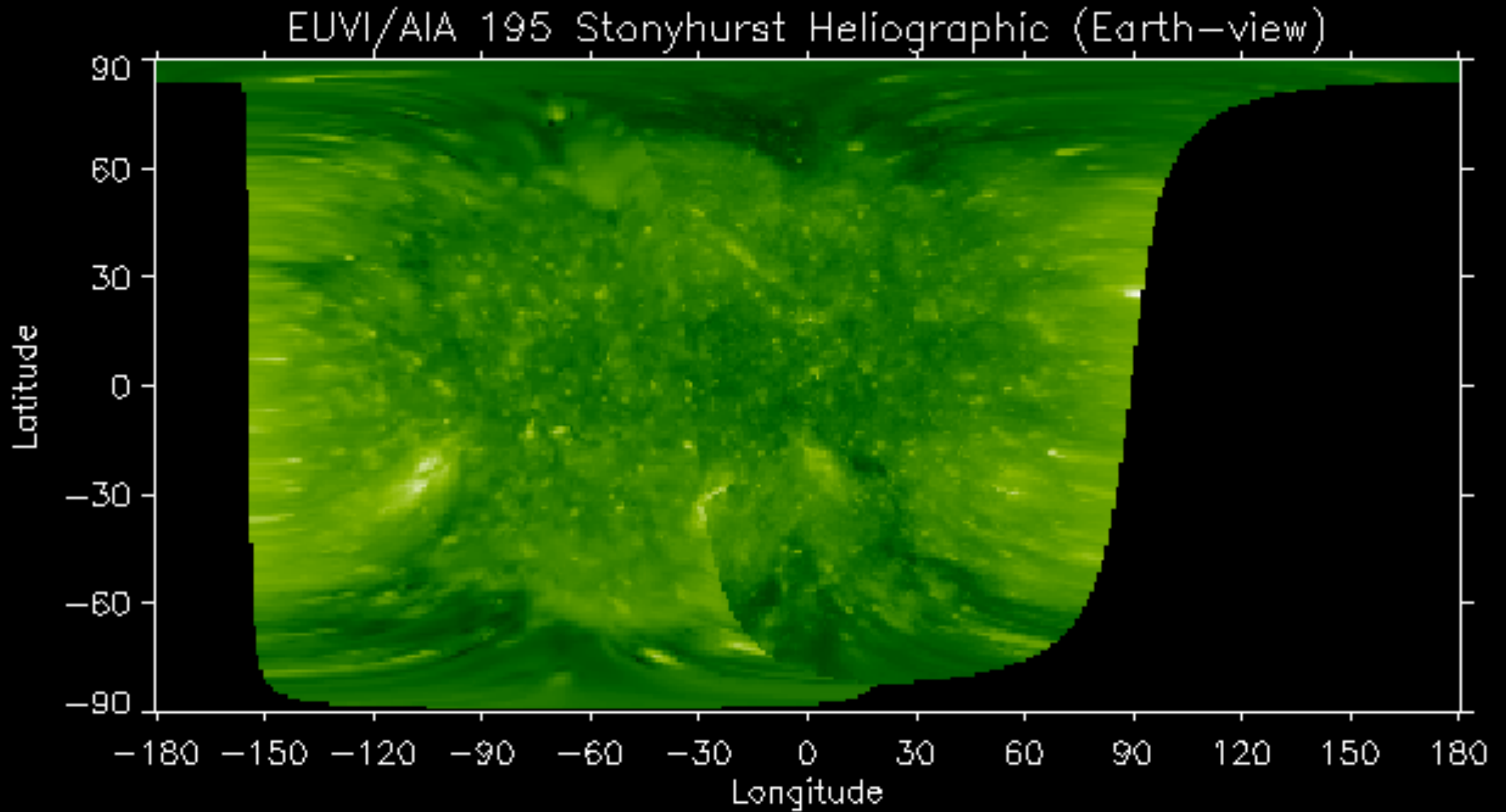
Outlook



Royal Observatory
of Belgium

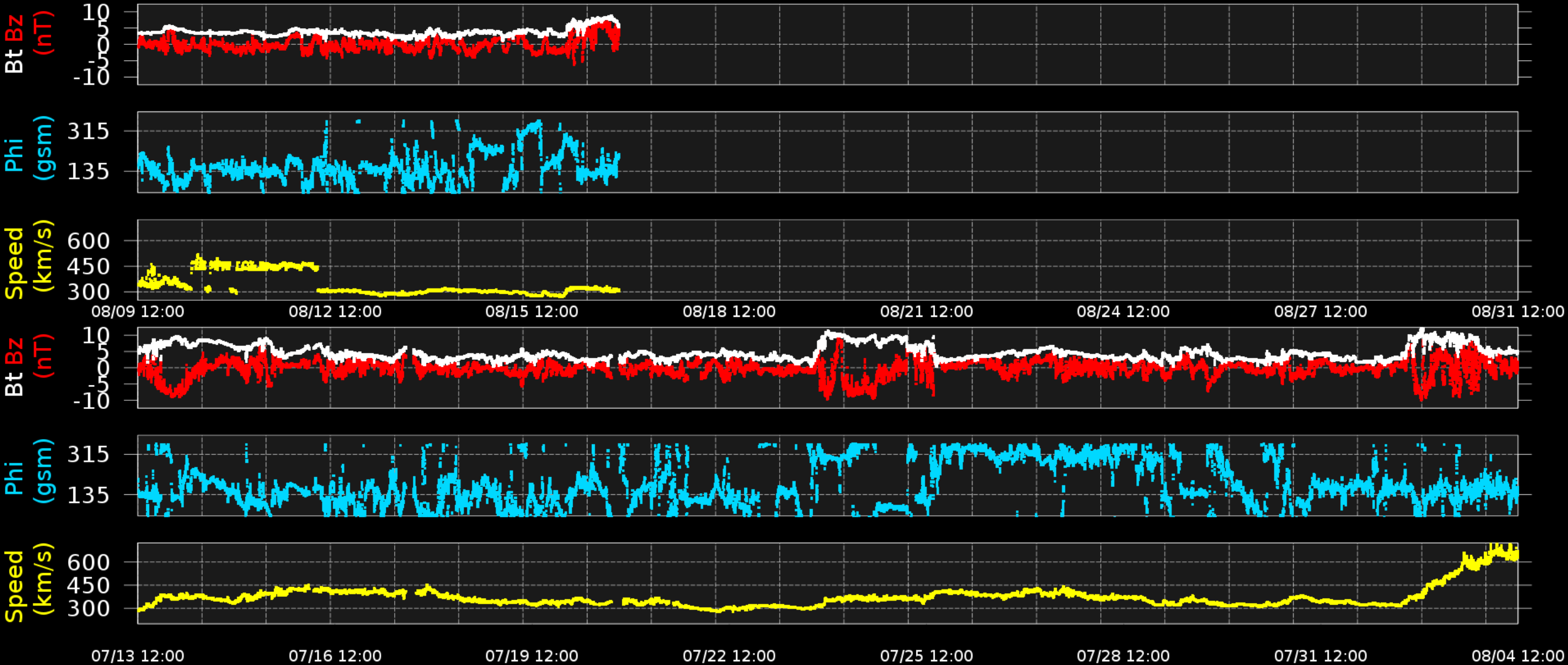
Solar Influences
Data analysis Centre
www.sidc.be

Outlook: Solar activity



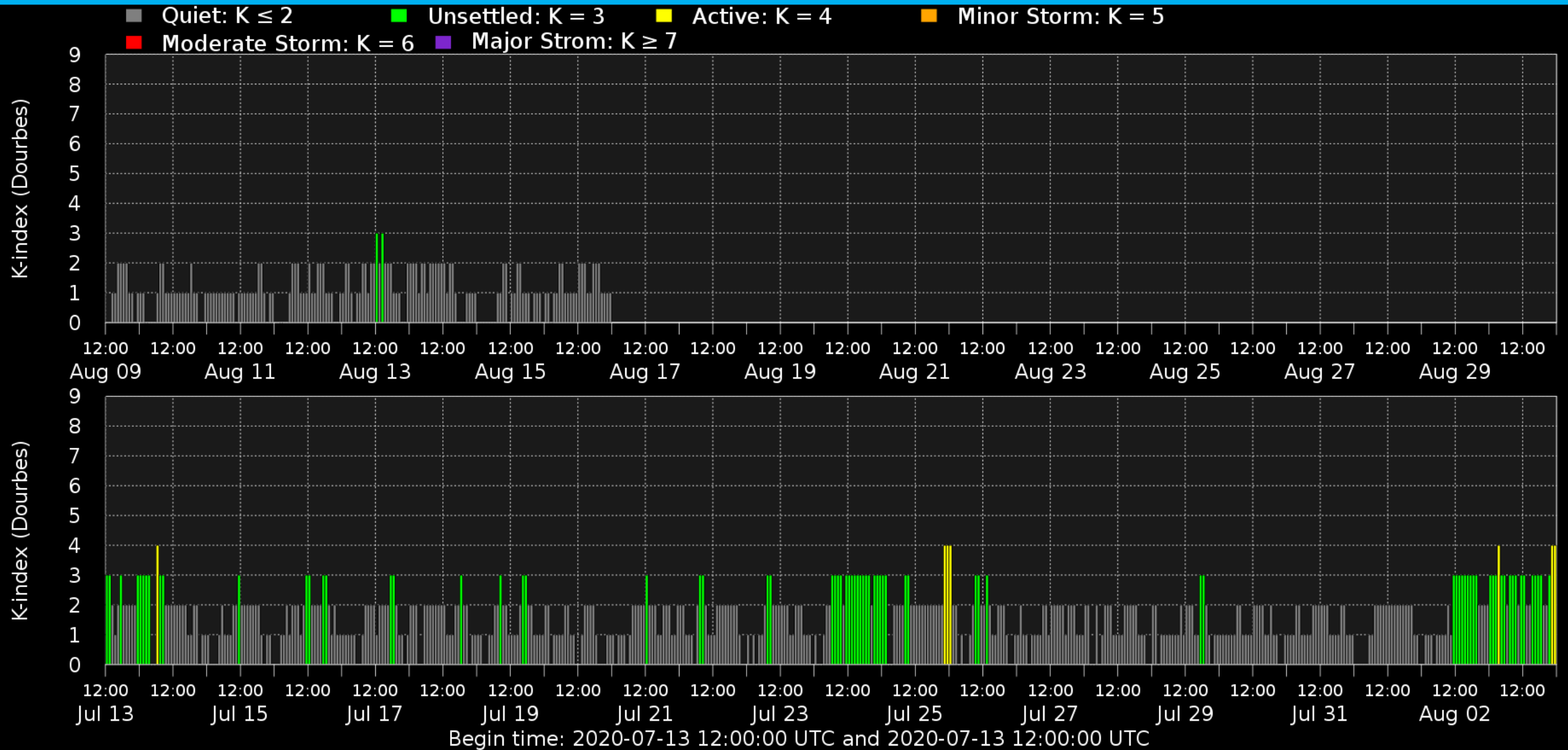
Outlook: Solar wind

DSCOVR (ngdc.noaa.gov/dscovr)



Begin time: 2020-07-13 12:00:00 UTC

Outlook: Geomagnetic activity



SIDC Space Weather Briefing

See you at our next briefing!

Or visit us at www.sidc.be



Royal Observatory
of Belgium

Solar Influences
Data analysis Centre
www.sidc.be